



# Camden Community Connections Annual Report 2012 - 2013



*Children &  
Families*



*Celebrating Community*



*Youth*



*Community*



*Groups*

# *Strengthening and Empowering our Community*

## Contents

About Us	page 3
Management Committee	page 4
President and Manager's Report	page 5-6
Children's Services	page 7
Youth Services	page 8
Community Development Services	page 9-11
Snapshots	page 12-13
Groups	page 14
Acknowledgements	page 15-16
Financials	page 17

# *Strengthening and Empowering our Community*

## About Us



Camden Community Connections (CCC) is a not-for-profit community organisation with no religious or political affiliations, based in Narellan and serving the entire Camden Local Government Area (LGA). Providing services for over 25 years, CCC was originally founded to provide community services and facilities for the new housing developments and associated growing population in and around Camden and Narellan where there were no existing services. CCC aims to strengthen and enrich the community by connecting people with local services, community activities and each other and has responded to the changing needs of the community as it has increased in size and diversity. We are committed to ensuring that we understand the people that live in our community and their needs through consultation and a key focus of our programs is to ensure equity of access for all groups in our community.

### **Our Vision**

A strong and empowered community, where active participation in community life reduces isolation and disadvantage and improves overall quality of life

### **Our Mission**

To build and support strong, inclusive and connected communities in established and emerging localities across the Camden Local Government Area

### **Our Values**

**Community Focused** - Listening to and involving the community; focusing on providing services that are needed and that will improve the lives of residents in our community

**Forward Thinking and Innovative** - Embracing change and responding to the changing needs of the community; open to new ideas and innovative programs

**Respectful and Inclusive** - Developing services for people of all ages, backgrounds and circumstances; culturally appropriate, valuing diversity and respecting differences; ensuring access and equity in provision of services, information and employment

**Professional and Accountable** - Focusing on quality and continuous improvement; accountable to all stakeholders; valuing staff and volunteers; collaborative





## Management Committee



### **Ray Monahan – Chairperson**

Ray moved into the role of Chairperson in May 2013 following the resignation of Judith Taylor. Ray and his family reside in the local area and he is interested in ensuring there are suitable services for children and families residing in the Camden LGA. Ray is a member of Camden and Narellan Men's Shed and the Camden Community Gardens Committee. He has been on the CCC Management Committee for four years.



### **Meran Kidd – Treasurer**

Meran is a local resident and has operated her own bookkeeping business for over ten years. She is a member of the Association of Accounting Technicians and a Justice of the Peace. Meran has served as the Treasurer of the CCC Management Committee for the past four years.



### **Joan Scott – Secretary**

Joan is a local resident with a long standing family history in the area. She is passionate about local issues and is affiliated with the Girl Guides and the Camden Museum. Joan is also involved in the Seniors Issues Group and has served on the CCC Management Committee for the past seven years.



### **Judith Taylor**

Judith Taylor resigned from the position of Chairperson in May 2013. Judith is a local resident and is Community Services Manager at Macarthur Diversity Services as well as a Justice of the Peace. Judith has works in the community sector for over twenty years and served as the Chairperson of the CCC Management Committee for 3 ½ years.



### **Lesley Lee**

Lesley joined the CCC Management Committee in March 2013. Lesley is Program Manager Operations at Macarthur Temporary Family Care and has many years experience working in the community sector within the Macarthur region. She has a particular interest in ensuring equity of access to community services for everyone in the community.



### **William McCormack**

Will has lived his entire life in the Camden LGA and is dedicated to serving the local community. He is a company director and brings valuable business expertise as well as good local knowledge to his role on the CCC Management Committee. He has served on the CCC Management Committee for almost three years.

*Paul Stevens resigned from the Management Committee in July 2012.*

*Noelene Rudolph resigned from the Management Committee in August 2012.*

# *Strengthening and Empowering our Community*

## **President & Manager's Report**



Camden Community Connections has had an exciting year of growth, with a significant increase in the number of programs, services and events provided to support and enhance the lives of people living in our community. There has been a strong focus on raising the profile of our organisation and this has resulted in an increase in membership and in the number of people accessing our service.

The growth experienced during the past year has been underpinned by a strong commitment from all staff to meet new challenges and embrace opportunities that have enabled us to better meet the needs of the growing population in the Camden LGA. Our team has undergone a few changes during the year. In April we welcomed Mark Jackson as our new Community Development Worker, replacing Carmelina Nunnari who moved to the Wollondilly area. Myrtle Mooney, who was working in the administration role, left in April when this position came to an end and Elleneta Hocking took over the bookkeeping role in June, replacing Kathy Key.

We would like to acknowledge and thank the staff for their important contribution to the achievements of the organisation over this past year. The commitment and hard work of the Management Committee must also be recognised. CCC's ability to effectively consult with the community; identify needs; and provide relevant quality services, program and events now and into the future is reliant on the collaborative efforts of our staff, Management Committee, volunteers, partners and other stakeholders.

We have worked hard throughout the year to provide relevant services, programs and events for all groups in the community and we have successfully engaged with an increased number of people, many of whom had not previously accessed our service. Our regular playgroups, youth activities, and other services including Tax Help, were again successful and we also facilitated many other programs and activities during the year. Making good use of our bus we introduced a cultural bus tour program for seniors; a series of shopping trips; and a regular service to Leppington Forest Lawn cemetery. All of these proved to be extremely popular and indeed we were unable to satisfy the demand for these services, demonstrating that one of the key concerns for seniors in the Camden LGA is access to transport.

During the year we successfully facilitated a number of cross generational programs. These included our Food 4 Thought program funded by MDSI; Connecting Women therapeutic art program, funded by IMB; and a Community Mosaic project. The community mosaic project arose out of a desire to bring people of all ages together to work on a community project and at the same time provide an opportunity for the participants to connect with each other. Participants aged 14 - 80 years worked together for 8 weeks to mosaic four tables that are now being enjoyed by visitors to the Macarthur Centre for Sustainable Living.

Our school breakfast program has continued to be popular, running in Leppington Public School; Mt Annan High and Camden High. We have relaunched our Kids Club program and are now running two workshops for children 5-12 during each school holidays. A key focus of our youth program has been to support at risk youth through case management. A Girls Group has successfully been facilitated by our youth worker each week at Mt Annan High School with one of the highlights being a Community High Tea organised by the Girls Group at Camden Civic Centre in May.

# Strengthening and Empowering our Community

## President & Manager's Report



These few examples demonstrate the innovative spirit of the CCC staff, as they seek to develop programs and activities to meet the needs of the community. This innovation has been well rewarded as during the year we have attracted funding from different sources for a number of programs. We received funding from Camden Council for youth, children and family programs. IMB have funded a Women's Therapeutic Art program and the NRMA have provided funding for a Road Safety program. MDSI provided funding for two Food Security programs and we have received a grant from the Department of Veterans' Affairs for a youth project to commemorate the centenary of WWI. We also received funding from ADHC to facilitate Seniors Week and Carers Week events.

One of the key highlights of this past year was our successful funding submission to Landcom to facilitate the community development program for East Village Spring Farm. The initial contract period is for two years and the project commenced on the 1st July 2013. This is an excellent opportunity for our organisation to utilise our local community building expertise to enhance the lives of new residents of East Village and to connect them with each other and with the greater community in the Camden LGA.

Recognising the importance of effective communications to reach all groups in the community, this year we have focused on developing a communications strategy. The Management Committee have finalised our Strategic Plan 2013-2016 and this will underpin our direction and activities over the next few years. We have invested in the redevelopment of our website and have launched a new Facebook page both of which will play an important role in delivering information into the community. CCC flyers have been redesigned and we communicate with the community on a regular basis through the distribution of quarterly newsletters and flyers promoting our activities. Our communications strategy will be supported by our quarterly networking events where CCC staff facilitate information sessions and network with local organisations and community members. The first event was in May 2013 and these will continue as a regular event in the CCC calendar.

The future for CCC is bright and we are well positioned to meet the needs of the expanding community residing in the Camden LGA. Our staff are professional, positive and energetic, and we have a committed Management Committee. We also have a high standard of corporate governance; our internal operating systems are current and responsive to changing needs; and our communications strategy will ensure that we have a good understanding of the needs of people residing in the Camden LGA that will support our vision of a strong and empowered community.



*A. Monahan*

President



*A. Watt*

Manager

# Strengthening and Empowering our Community

## Children's Services



### FUNDING

The Children's Services Program (CSP) is funded by the NSW Department of Family and Community Services (FACS). Other financial support was received from Camden Council and the Macarthur Lions Club.

### SUMMARY

In the past year the Children's Services Program has provided a range of programs to support families and children living in the Camden LGA. Programs and activities have included weekly supported and parent run playgroups; a weekly breakfast program at Leppington Public School; a kids club program during school holidays; parenting workshops with a focus on connecting parents and building parenting skills; support for a transition to school program; and involvement in local community festivals.

From July 2013 the Children's Services Program will be funded by the NSW Department of Education. With the continued increase in young families with children moving into the Camden LGA it is expected that the demand for quality services and programs that support families and children will increase and we are committed to seeking opportunities to further develop the services we currently deliver.

### HIGHLIGHTS

A Camden Parent Support Program ran during March and April with the aim of meeting the need for social support networks for parents who are new to the Camden Area and providing information to help build parenting skills. Ten families attended the program which was facilitated by notable guest speakers from the Macarthur region and funded by Camden Council Community Small Grants Program.

Camden Community Connections (CCC) participated in a number of community events. Most notable was the Camden Play Day at Kirkham Oval with over 2,000 participants. CCC shared an activity tent with Macarthur Temporary Family Day Care and provided various activities for the children including a family tree coloring competition.

The Kids Club Program was re-established last October with a Hip Hop workshop for children aged 5-12 years. The Kids Club program provides a variety of workshops for children during the school holidays and the return of this program has been welcomed by parents seeking quality, affordable activities for their children.

### EVENTS | PROGRAMS| SERVICES

Bright Eyes Supported Playgroup In partnership with Benevolent Society	Mondays, during school term
Bright Stars Playgroup	Thursdays, during school term
Leppington Supported Playgroup	Tuesdays, until December 2012
Leppington Breakfast Outreach	Tuesdays, during school term
Playlinks Supported Playgroup In partnership with Northcott Disability Services and Benevolent Society	Wednesdays, during school term
Leaping Learners Transition to School Program Leppington Public School	July 2012 - December 2012
Camden Kids Fun Day	12 <sup>th</sup> September 2012
Family Fun Day Oran Park In partnership with Macarthur Temporary Family Day Care	26 <sup>th</sup> September 2012
Kids Club Hip Hop Workshop	3 <sup>rd</sup> October 2012
Narellan Rhythms	20 <sup>th</sup> October 2012
Kids Club Circus Workshop	23 <sup>rd</sup> January 2013
Camden Parent Support Program	March/April 2013
Kids Club Self-Defense Workshop	17 <sup>th</sup> April 2013
Kids Club Athletics Workshop	24 <sup>th</sup> April 2013
Camden Play Day	26 <sup>th</sup> May 2013

# Strengthening and Empowering our Community



## Youth Services

### FUNDING

The major source of funding for our Youth Service's Early Intervention and Placement Prevention (EIPP) Program comes from NSW Department of Family and Community Services (FACS). The EIPP program offers young people, aged 12 – 18 years, and/or their families living in the Camden Local Government Area information, support, referrals and case management.

During the year 2012-2013 we received funding for youth programs from the following sources:  
NSW Department of Family and Community Services  
NSW Office of Communities Veterans' Affairs  
Camden Council  
Narellan Rotary

### SUMMARY

Another year down the track, the EIPP program has continued to strengthen and referral pathways have been established with a number of Macarthur based youth services. Transitioning to the EIPP model has seen the end of the CAYS drop in centre, a sad moment for the staff who had worked on the program, however CCC has now taken the opportunity to develop new and exciting relationships with the local community. Local High Schools have demonstrated an interest in the EIPP program with many schools engaging with CCC youth support workers. A Girls Group was established at Mt Annan High School to help identify opportunities and provide support for disengaged and at risk female students. The focus of the EIPP program going forward is to continue to support youth in the Camden LGA through the provision of information, programs, activities and individual case management.

We have continued to engage with young people across the community and have been involved in a number of different programs. The Narellan Youth Outreach program was held during daylight savings months and again proved to be popular with local young people. The breakfast program continued at Mt Annan High School with over twenty students accessing the program each week. CCC also organised and facilitated a number of exciting youth events during the year.

### HIGHLIGHTS

Youth Week – Camden Council provided funding to CCC as part of the Camden Youth Week program. On the 9<sup>th</sup> April 2013 CCC facilitated a Youth Kitchen for youth with a disability at the Macarthur Centre for Sustainable Living. Twenty young people participated in the youth kitchen.

International Girls' Day held on the 16<sup>th</sup> November 2012 in partnership with Mt Annan High School, with the support of local business professionals and artists. The aim of the day was to celebrate and promote confidence and self-esteem among girls and young women and over 200 young people from a number of local schools participated in a wide variety of workshops including Cooking, Nutrition, Finance, Zumba, Facebook, Self Defence, Picture Framing, Hair and Beauty, Circus Skills, Jewellery Making and Arts and Crafts.

Mt Annan Girls Group Community High Tea – held on 29<sup>th</sup> May 2013 at the Camden Civic Centre with funding from Camden Council Community Small Grants Program. The Girls group, facilitated by a CCC Youth Worker, meets weekly and the participants planned, promoted and hosted a High Tea for the local community. Over fifty people enjoyed the afternoon which also included entertainment provided by a local musician. The girls involved in organising this event gained skills in event management, catering, hospitality, and public speaking. Their experience working on this project gave them more confidence in their skills and abilities and improved their self-esteem.

### EVENTS | PROGRAMS | SERVICES

Camden Area Youth Service Drop In Centre	June - November 2012
Breakfast Program Mt Annan High School	July 2012- June 2013
Mt Annan Girls Group	July 2012- Ongoing
Case Management	June 2012- Ongoing
Narellan Youth Outreach Program (Daylight Savings)	October 2012 - April 2013
International Girls Day	16th November 2012
Youth Week – Youth Kitchen	9 <sup>th</sup> April 2013
Regional Youth Forum	9 <sup>th</sup> April 2013
Community High Tea 'Get Fascinated'	29 <sup>th</sup> May 2013



# *Strengthening and Empowering our Community*

## Community Development Services

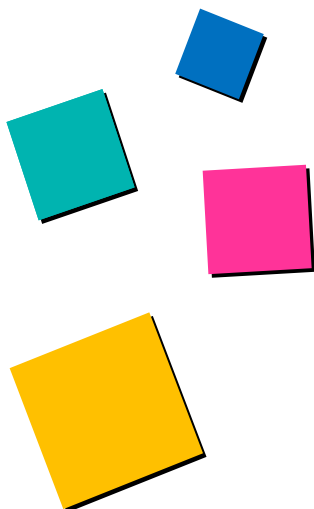


### FUNDING

The major source of funding for our Community Development Services, Community Builders, comes from NSW Department of Family and Community Services (FACS). Our community program aims to strengthen, enrich and empower the community of Camden by providing a wide range of services for all groups in our community.

During the year 2012-2013 we received funding for community programs from the following sources:

NSW Department of Family and Community Services  
ADHC  
Camden Council  
IMB  
NRMA  
Carers NSW  
Macarthur Diversity Services Initiative  
Cobbitty Markets



### SUMMARY

It's the end of another financial year and what a positive year it has been for our Community Development service. From bus tours for seniors, to cooking workshops and community projects, we have successfully engaged and provided services for over eight thousand seniors, families and children residing in the Camden LGA.

This year, we have focused on building stronger networks and partnerships; lifting the profile of CCC; expanding our reach across the community; and better understanding the needs of people residing in the Camden LGA. Our renewed perspective on the needs of the community as well as a number of successful grant applications enabled us to provide a wide variety of innovative programs and activities during the year.

Recognising the need for more programs for seniors in the Camden community, CCC introduced a program of bus tours for seniors and a series of information sessions for seniors. Attendance and feedback for these services has been extremely positive.

We have also had a strong focus on providing intergenerational programs this year. With a focus on breaking down the age barriers and fostering collaboration between generations, we have successfully encouraged people of all ages to interact, engage and participate together in programs, workshops and events.



## Community Development Services



### HIGHLIGHTS

#### **Project Art Connect - Mosaics**

With funds raised at the CCC garage sale in February and with the generous support of Bunning's Narellan, CCC facilitated a mosaic project at the Macarthur Centre for Sustainable Living commencing in April 2013. This project arose out of a desire to bring people of all ages together to work on a community project and at the same time connect with each other. This intergenerational project ran for ten weeks and involved decorating four tables at the Macarthur Centre for Sustainable Living. Participants ranged from school students as young as fourteen to senior participants over eighty years old. The mosaic tables are a lasting tribute to the power of community to break down barriers and achieve goals together.

#### **Food 4 Thought**

Funded by Macarthur Diversity Services Initiative (MDSI), CCC ran a series of workshops based around food security and sustainability. The project consisted of two, six week programs that focused on cooking with fresh ingredients and teaching participants a range of skills such as building a vegetable plot and cheese making.

#### **Bus Tours for Seniors**

Recognising one of the key concerns for seniors is transport, CCC organised a program of bus tours for seniors during the year. The program commenced in October 2012 with the introduction of a regular bus service to Leppington Forest Lawn Cemetery. This was followed by the launch of a shopping trip service in December. Each quarter, a visit to a different shopping centre is scheduled which enables seniors to visit centres they cannot otherwise access. In April, we launched our cultural bus tour program for seniors with a visit to the Nan Tien temple in Wollongong. This was followed by two mystery bus tours to local areas of interest. We have more tours scheduled during 2013, all of which are fully booked, indicating that there is real need for such programs to continue into the future.

#### **Seniors Week Tai Chi High Tea**

On 18<sup>th</sup> March 2013, sixty five local seniors enjoyed a display of Tai Chi followed by a high tea served by CCC staff. At the event, funded by ADHC, the seniors enjoyed homemade sandwiches and cakes and entertainment provided by musicians from Macarthur Anglican School.

#### **Quarterly Networking Events**

This year saw the launch of CCC's quarterly networking events. At the first event in May, over fifty people were in attendance and they enjoyed a powerful presentation on depression from a guest speaker from the Black Dog Institute. These quarterly networking events will be an important component of CCC's strategy to build strong relationships with individuals and organisations in the Camden LGA.

#### **Christmas Giving Tree**

With the support of Camden Council Library, the Christmas Giving Tree project was established to collect Christmas gifts for those less fortunate in our community. The gifts were distributed to families through Macarthur Temporary Family Care, Mother Hubbard's Cupboard and Lifeline.

We were overwhelmed by the generosity of local residents who contributed over 220 gifts to the Giving Tree. Over eighty local families benefitted from this community spirit of Christmas giving.





## Community Development Services

### EVENTS | PROGRAMS | SERVICES

Events		Date
IGNITE! Camden		31 <sup>st</sup> August 2012
Camden Kids Fun Day		12 <sup>th</sup> September 2012
Elderslie High School Medieval Fair		22 <sup>nd</sup> September 2012
Carers Week Therapeutic Journal Writing Workshop		15 <sup>th</sup> October 2012
Narellan Rhythm's Festival		20 <sup>th</sup> October 2012
International Girls Day		16 <sup>th</sup> November 2012
Light - Up Camden		17 <sup>th</sup> November 2012
Kids Hurt Too Forum		21 <sup>st</sup> November 2012
Camden Community Connections AGM		28 <sup>th</sup> November 2012
Camden Community Connections Garage Sale		23 <sup>rd</sup> February 2013
Seniors Week Tai Chi High Tea		18 <sup>th</sup> March 2013
Camden Play Day		26 <sup>th</sup> May 2013
CCC Quarterly Networking Event		21 <sup>st</sup> May 2013
Get Fascinated High Tea		29 <sup>th</sup> May 2013
Bunning's BBQ		5 <sup>th</sup> May 2013
Programs		Date
Financial Workshops Program		August 2012
Christmas Giving Tree Program		November 2012 – December 2012
Food Security Workshop -Round 1		February - April 2013
Project Art Connect: Mosaics		May - June 2013
Food Security Round 2		June - July 2013
TAFE Computer Course		School Terms July 2012 - June 2013
Sessions for Seniors - Internet Safety		4 <sup>th</sup> June 2013
Active Over Fifties	Tai Chi Harrington Park	July 2012 – June 2013
	Tai Chi Narellan	October 2012 – June 2013
	Leppington Forest Lawn Cemetery	October – June Monthly
	Cultural Bus Tours	April 5th, March 22nd, April 5th April 12th, May 17
	Shopping Trips	December 7th, March 15th, July 5th
Bus Tours for Seniors		
Services		Date
Information and Referral		Ongoing
Centre Facilities (Phone, Fax, Photocopier)		Ongoing
Tax Help		July 2012 - October 2012
Macarthur No Interest Loans Scheme (NILS)		May 2013 - June 2013

# *Strengthening and Empowering our Community*



**IGNITE CAMDEN**

August 2012



**ORAN PARK FAMILY FUN DAY**

September 2012



**SENIORS WEEK TAI CHI HIGH TEA**

March 2013



**CARERS WEEK JOURNAL WRITING**

October 2012



**CAMDEN KIDS FUN DAY**

September 2012

# *Strengthening and Empowering our Community*



**FOOD 4 THOUGHT**

February 2013



**FOOD 4 THOUGHT**

June 2013



**MOSAIC PROJECT**

April – June 2013



**KIDS CLUB CIRCUS WORKSHOP**

July 2012



**MYSTERY BUS TOUR**

March 2013

# *Strengthening and Empowering our Community*



## **Groups**

### **CAMDEN JUST WALK IT WALKING GROUP (CJWI)**

The Camden Just Walk It walking group has been auspiced by Camden Community Connections since the group started in 2000. CJWI celebrates another birthday after twelve years of walking the Camden cycleway. With 18 members, they walk every Tuesday, rain or shine. Run by volunteers, the group encourages anyone to come along, it's great for slow walkers, as well as the faster ones and its free.

### **MOUNT ANNAN WANDERER'S WALKING FOR PLEASURE**

The Mount Annan Wanderers' Walking for Pleasure group has been auspiced by Camden Community Connections since 2003. This group is also run by volunteers and with an average of 15 members they walk every Friday morning, rain, hail or shine at the Mount Annan Botanic Garden.

### **MACARTHUR SPINNERS AND WEAVERS**

In its eleventh year, the Macarthur Spinners and Weavers is a group of enthusiastic people who gather together to exchange ideas, learn new techniques, and further their crafts. The groups meet every Friday from 9.30-3pm at the Country Women's Association rooms in Camden. On average 18 members attend each week and the group include both males and females.

### **POLYMYALGIA RHEUMATICA SUPPORT GROUP (PMR)**

Auspiced by Camden Community Connections, the PMR group meets every month from February to November in the CCC meeting room from 10-12 pm. This year there have been several people inquiring about PMR. The group is a means of providing support to those fighting this painful sickness, providing them with information and answering their questions.





# *Strengthening and Empowering our Community*

## Acknowledgements



***The CCC Management Committee would like to thank all CCC staff and volunteers for their support during the past year.***

### **Staff**

Amy Livingstone  
Carmelina Nunnari  
Catherine Gonzaga  
Elleneta Hocking

Kathy Key  
Manusiu Tupola  
Maria Esma  
Mark Jackson

Myrtle Mooney  
Sue Watt  
Victoria Cruickshank

### **Volunteers**

Alisa Restuccia  
Anneyshia Brewty  
Breeanna Hardy  
Caitlin Cook  
Caitlin Hurst  
Chloe Boateng  
Christopher Martin  
Courtney Griffin  
Heulwen Dixon  
Jason Boyd  
Jessica Khalil

Kayla Cordewen  
Kiarnee Holmes  
Laura Amor  
Laura Metcalfe  
Maddison Chapman  
Madeleine Kapira  
Melissa von Senden  
Neel Gobin  
Peter Thai  
Rachel Irwin

Savannah Pizel  
Shriya Rattan  
Tayla Bray  
Taylah Collimore Burke  
Taylor Freeman  
Thomas Pearson  
Tim Webb  
Zoe Beckett

*Camden Community Connections Staff November 2013*



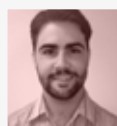
Sue Watt



Maria Esma



Catherine Gonzaga



Mark Jackson



Rachelle Barber



Elleneta Hocking



## Acknowledgements

**CCC gratefully acknowledges the following people, partnership organisations, and government agencies for their financial or in kind support during 2012-2013**

Abbey Rose Personal Training	LCSA	Nerida Deane
ADHC	Leppington Forest Lawn Cemetery	Northcott Disability Services
Annette Arany	Leppington Public School	NRMA
Australian Taxation Office	Lifeline Narellan	NSW Department of Education
Bakers Delight Narellan Town Centre	Lolliland	NSW Health South Western Sydney
Bob Mitchell	Macarthur Centre for Sustainable living	NSW Department of Family and Community Services
Bunnings Narellan	Macarthur Anglican College	NSW Police
Cake Biz Narellan	Macarthur Chronicle	PMR Group
Camden Advertiser	Macarthur Community Access Care Pair	Russell Matheson, Federal MP for Macarthur
Camden Civic Centre	Macarthur Disability Services	Rydges Campbelltown
Camden Council	Macarthur Diversity Services	Salvation Army Narellan
Camden Council Library Services	Macarthur Legal Centre	Sector Connect
Camden High School	Macarthur Lions Club	Select Wholesale Meats Narellan
Camden Just Walk It	Macarthur NILS	Seniors Issues Group
Camden Seniors Issues Group	Macarthur Temporary Family Care	Serene Harris
Camden Spinners and Weavers	Maree Zavarise	Simply Serene
Camden Town Farm	McDonalds	South Western Sydney Medical Local
Campbelltown Performing Arts High School	Mission Australia	Streets Ice Cream - Unilever
Carers NSW	Morpheus Academy	Sue Gordon
Chris Patterson, State Member for Camden	Mother Hubbard's Cupboard	The Benevolent Society
Cobbitty Markets	Mt Annan High School	The Black Dog Institute
Council of the Ageing (COTA)	Mt Annan Leisure Centre	The Camden/Wollondilly DV Committee
Dumaresq Street Cinemas	Mt Annan Wanderers	The Common Ground Cafe
Elderslie High School	MTC Work Solutions	The District Reporter
Heart Foundation	Narellan Community Health Centre	The Junction Works
Home Quarters Camden	Narellan Congregational Community Services	The Strictly Limited Company
IMB	Narellan Newsagency	Uniting Care Burnside Family Referral Service
Karitane Camden	Narellan Rotary Club	UWS School of Medicine
Kelloggs	Narellan Town Centre Management	Volunteering Macarthur
Lara Symkowiak, Mayor of Camden		



## Financials

### Treasurers Report

Camden Community Connections has reported a net surplus of \$23,806 for the year ending 30 June 2013.

Total Revenue: \$414,422

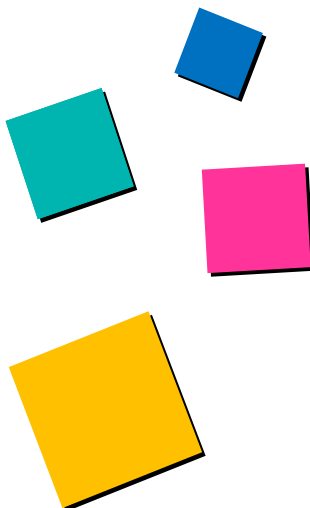
Total Expenses: \$390,616

The closing cash balance as at 30 June was \$236,187 with a retained surplus of \$159,857.

Full details are available in the audited Financial Statements included in the annual report.



**Treasurer**





Camden  
Community  
Connections

**STATEMENT OF COMPREHENSIVE INCOME  
FOR THE YEAR ENDED 30 JUNE 2013**

	<b>Note</b>	<b>2013 \$</b>	<b>2012 \$</b>
Revenue from ordinary activities	<b>2</b>	414,422	438,372
Depreciation expense	<b>3</b>	-	-
Employee benefits expense		(217,408)	(222,799)
Other expenses from ordinary activities	<b>3</b>	<u>(173,208)</u>	<u>(192,439)</u>
<b>Surplus from ordinary activities before income tax</b>		<b>23,806</b>	<b>23,134</b>
Income tax expense relating to ordinary activities	<b>1(a)</b>	<u>-</u>	<u>-</u>
<b>Net surplus from ordinary activities after income tax</b>		<b><u>23,806</u></b>	<b><u>23,134</u></b>
<b>Other comprehensive income</b>			
Net gain on revaluation of financial assets		<u>-</u>	<u>-</u>
<b>Other comprehensive income for the year, net of tax</b>		<u>-</u>	<u>-</u>
<b>Total comprehensive income for the year</b>		<b><u>23,806</u></b>	<b><u>23,134</u></b>
Total comprehensive income attributable to members of the entity		<b><u>23,806</u></b>	<b><u>23,134</u></b>

*The accompanying notes form part of these financial statements.*

**STATEMENT OF FINANCIAL POSITION**  
**AS AT 30 JUNE 2013**

	<b>Note</b>	<b>2013</b> <b>\$</b>	<b>2012</b> <b>\$</b>
<b>CURRENT ASSETS</b>			
Cash and cash equivalents	<b>4</b>	236,187	190,413
Trade and other receivables	<b>5</b>	290	3,170
Other current assets	<b>6</b>	2,985	3,107
<b>Total current assets</b>		<b>239,462</b>	<b>196,690</b>
<b>NON-CURRENT ASSETS</b>			
Property, plant and equipment	<b>7</b>	-	-
<b>Total non-current assets</b>		<b>-</b>	<b>-</b>
<b>Total assets</b>		<b>239,462</b>	<b>196,690</b>
<b>CURRENT LIABILITIES</b>			
Trade and other payables	<b>8</b>	27,712	22,559
Other liabilities	<b>9</b>	36,549	31,581
Provisions	<b>10</b>	15,344	6,499
<b>Total current liabilities</b>		<b>79,605</b>	<b>60,639</b>
<b>Total liabilities</b>		<b>79,605</b>	<b>60,639</b>
<b>Net assets</b>		<b>159,857</b>	<b>136,051</b>
<b>Represented by</b>			
<b>EQUITY</b>			
Retained surplus	<b>11</b>	159,857	136,051
<b>Total equity</b>		<b>159,857</b>	<b>136,051</b>

*The accompanying notes form part of these financial statements.*



**STATEMENT OF CHANGES IN EQUITY**  
**AS AT 30 JUNE 2013**

	<b>Retained Earnings \$</b>	<b>Total Equity \$</b>
<b>Balance as at 1 July 2011</b>	<b>112,917</b>	<b>112,917</b>
Surplus attributable to members	23,134	23,134
<b>Balance as at 30 June 2012</b>	<b>136,051</b>	<b>136,051</b>
Surplus attributable to members	23,806	23,806
<b>Balance as at 30 June 2013</b>	<b>159,857</b>	<b>159,857</b>

*The accompanying notes form part of these financial statements.*



**STATEMENT OF CASH FLOWS  
FOR THE YEAR ENDED 30 JUNE 2013**

	<b>Note</b>	<b>2013</b>	<b>2012</b>
		<b>\$</b>	<b>\$</b>
<b>CASH FLOW FROM OPERATING ACTIVITIES</b>			
Receipts from members and governments		387,335	408,191
Payments to suppliers		(350,701)	(415,372)
Interest received		9,140	3,590
<b>Net cash provided by (used in) operating activities</b>	<b>12b</b>	<u><b>45,774</b></u>	<u><b>(3,591)</b></u>
 <b>CASH FLOW FROM INVESTING ACTIVITIES</b>			
Payment for property, plant & equipment		<u>-</u>	<u>-</u>
<b>Net cash provided by (used in) investing activities</b>		<u><b>-</b></u>	<u><b>-</b></u>
 Net increase (decrease) in cash held		45,774	(3,591)
Cash at the beginning of the year		<u>190,413</u>	<u>194,004</u>
<b>Cash at the end of the year</b>	<b>12a</b>	<u><b>236,187</b></u>	<u><b>190,413</b></u>

*The accompanying notes form part of these financial statements.*

**NOTES TO THE FINANCIAL STATEMENTS  
FOR THE YEAR ENDED 30 JUNE 2013**

---

**NOTE 1 STATEMENT OF SIGNIFICANT ACCOUNTING POLICIES**

Camden Community Connections Incorporated has elected to early adopt the Australian Accounting Standards - Reduced Disclosure Requirements as set out in AASB 1053: *Application of Tiers of Australian Accounting Standards* and AASB 2010-2: *Amendments to Australian Accounting Standards arising from Reduced Disclosure Requirements*.

The financial statements are general purpose financial statements that have been prepared in accordance with Australian Accounting Standards - Reduced Disclosure Requirements of the Australian Accounting Standards Board (AASB) and the *Associations Incorporations Act 2009 (NSW)*. The association is a not-for-profit entity for financial reporting purposes under Australian Accounting Standards.

Australian Accounting Standards set out accounting policies that the AASB has concluded would result in financial statements containing relevant and reliable information about transactions, events and conditions. Material accounting policies adopted in the preparation of these financial statements are presented below and have been consistently applied unless otherwise stated.

The financial statements, except for the cash flow information, have been prepared on an accruals basis and are based on historical costs, modified, where applicable, by the measurement at fair value of selected non-current assets, financial assets and financial liabilities.

**(a) Income Tax**

The Association is exempt from income tax as it is run as a not-for-profit association.

**(b) Property, Plant & Equipment**

Each class of property, plant & equipment is carried at cost or fair value as indicated less, where applicable, any accumulated depreciation and impairment losses.

The carrying amount is reviewed annually by the committee to ensure it is not in excess of the recoverable amount from those assets. The recoverable amount is assessed on the basis of the expected net cash flows which will be received from the assets employment and subsequent disposal. The expected cash flows have not been discounted to present values in determining recoverable amounts.

The depreciable amount of all fixed assets are depreciated or amortised over their estimated useful lives from the time the asset is held ready for use.

**(c) Cash**

Cash and cash equivalents include cash on hand and at call deposits with banks or financial institutions.

**(d) Revenue**

Revenue from the sale of goods and rendering of services is recognised upon the delivery of the goods or service to customers and members.



## **NOTES TO THE FINANCIAL STATEMENTS FOR THE YEAR ENDED 30 JUNE 2013**

---

### **NOTE 1 STATEMENT OF SIGNIFICANT ACCOUNTING POLICIES**

#### **(d) Revenue (continued)**

Grant revenue is received based on the grant conditions being met. All revenue is recognised net of GST.

#### **(e) Goods & Services Tax (GST)**

Revenues, expenses and assets are recognised net of the amount of GST, except where the amount of GST incurred is not recoverable from the Australian Taxation Office. In these circumstances the GST is recognised as part of the cost of acquisition of the asset or as part of an item of the expense. Receivables and payables in the statement of financial position are shown inclusive of GST.

#### **(f) Employee Benefits**

Provision is made for Camden Community Connections Incorporated's liability for employee benefits arising from services rendered by employees to the end of the reporting period. Employee benefits that are expected to be settled within one year have been measured at the amounts expected to be paid when the liability is settled.

Employee benefits payable later than one year have been measured at the present value of the estimated future cash outflows to be made for those benefits. In determining liability, consideration is given to employee wage increases and the probability that the employee may not satisfy vesting requirements. Those cashflows are discounted using market yields on national government bonds with terms to maturity that match the expected timing of cashflows.



Camden  
Community  
Connections

**NOTES TO THE FINANCIAL STATEMENTS  
FOR THE YEAR ENDED 30 JUNE 2013**

	<b>2013</b>	<b>2012</b>
	<b>\$</b>	<b>\$</b>
<b>NOTE 2 REVENUE</b>		
<b>Operating activities</b>		
Advertising and other income	2,688	2,877
Membership fees	145	236
Fundraising	6,955	727
Grants	294,750	300,166
Resources	769	1,576
Hiring - Bus	-	11,042
Management fees received	79,500	87,019
Program income	<u>2,528</u>	<u>2,373</u>
	<u>387,335</u>	<u>406,016</u>
<b>Non-operating activities</b>		
Donations	6,540	6,699
Interest	9,140	5,765
Workers compensation reimbursed	-	2,108
Transitional Funding	8,407	16,149
CAYS - Provisions recouped	<u>3,000</u>	<u>1,635</u>
	<u>27,087</u>	<u>32,356</u>
<b>Total revenue</b>	<u><b>414,422</b></u>	<u><b>438,372</b></u>

**NOTE 3 SURPLUS FROM ORDINARY ACTIVITIES**

**Surplus from ordinary activities before income tax  
expense has been determined after:**

**(a) Expenses**

Depreciation of non-current assets		
- computers & other equipment	<u>-</u>	<u>-</u>
<b>Other Expenses</b>		
Auditors remuneration	5,455	5,000
Insurance	4,388	3,918
Internet, phone & fax	4,971	4,839
Management fee	79,500	87,019
Bus expenses	4,679	5,331
Other program costs	12,537	12,070
Promotion	1,127	3,934
Rent	15,820	21,116
Superannuation contributions	17,030	17,510
Workers compensation	6,977	5,857
Other	<u>20,724</u>	<u>25,845</u>
	<u><b>173,208</b></u>	<u><b>192,439</b></u>





Camden  
Community  
Connections

**NOTES TO THE FINANCIAL STATEMENTS  
FOR THE YEAR ENDED 30 JUNE 2013**

	<b>2013</b>	<b>2012</b>
	<b>\$</b>	<b>\$</b>
<b>NOTE 4 CASH AND CASH EQUIVALENTS</b>		
<b>Current</b>		
Cheque account - Westpac	15,044	8,868
Cash reserve account - Westpac	64,113	31,162
Macarthur Credit Union - Fixed term deposit	-	150,000
Macarthur Credit Union - member shares	-	5
IMB Term Deposit	100,000	-
IMB Term Deposit	50,000	-
IMB Term Deposit	7,000	-
Cash on hand	30	378
	<u>236,187</u>	<u>190,413</u>
<b>NOTE 5 TRADE AND OTHER RECEIVABLES</b>		
Trade debtors	140	995
Other debtors	150	2,175
	<u>290</u>	<u>3,170</u>
<b>NOTE 6 OTHER CURRENT ASSETS</b>		
Prepayments	<u>2,985</u>	<u>3,107</u>
<b>NOTE 7 PROPERTY, PLANT &amp; EQUIPMENT</b>		
Bus & trailer	46,242	46,242
Less accumulated depreciation	<u>(46,242)</u>	<u>(46,242)</u>
	-	-
Furniture & fixtures - at cost	5,879	5,879
Less accumulated depreciation	<u>(5,879)</u>	<u>(5,879)</u>
	-	-
Computers & computer equipment - at cost	13,731	13,731
Less accumulated depreciation	<u>(13,731)</u>	<u>(13,731)</u>
	-	-
	<u>-</u>	<u>-</u>



Camden  
Community  
Connections

**NOTES TO THE FINANCIAL STATEMENTS  
FOR THE YEAR ENDED 30 JUNE 2013**

	<b>2013</b>	<b>2012</b>
	<b>\$</b>	<b>\$</b>
<b>(a) Summary of movements in carrying amounts</b>		
Balance at beginning of year	-	-
Additions	-	-
Disposals	-	-
Depreciation expense	-	-
Amounts written off	-	-
Carrying amount at the end of the year	<u>-</u>	<u>-</u>

**NOTE 8 TRADE AND OTHER PAYABLES**

**Current**

Trade creditors	2,879	1,990
BAS Liability & GST payable	6,039	5,809
PAYG Withholding	8,372	9,760
Credit cards	1,303	-
Accrued expenses	2,733	-
Superannuation payable	1,386	-
Accrued audit fee	5,000	5,000
	<u>27,712</u>	<u>22,559</u>

**NOTE 9 OTHER LIABILITIES**

**Current**

Prepaid funding	17,231	855
CAYS - funding accrued	9,613	12,613
Transitional funding	9,705	18,113
	<u>36,549</u>	<u>31,581</u>

**NOTE 10 PROVISIONS**

**Current**

Provision for annual leave	8,139	6,499
Provision for long service leave	7,205	-
	<u>15,344</u>	<u>6,499</u>

**NOTE 11 RETAINED SURPLUS**

**Movements during year**

Retained surplus at the beginning of the year	136,051	112,917
Surplus from ordinary activities	23,806	23,134
Retained surplus at the end of the year	<u>159,857</u>	<u>136,051</u>



Camden  
Community  
Connections

**NOTES TO THE FINANCIAL STATEMENTS  
FOR THE YEAR ENDED 30 JUNE 2013**

	2013 \$	2012 \$
<b>NOTE 12 CASH FLOW INFORMATION</b>		
<b>(a) Reconciliation of cash</b>		
Cash at the end of the financial year as shown in the statement of cash flows is reconciled to the related items in the statement of financial position as follows:		
Cash at bank	<u>236,187</u>	<u>190,413</u>
<b>(b) Reconciliation of cash flow from operations with surplus from ordinary activities after income tax</b>		
Surplus from ordinary activities after income tax	23,806	23,134
Non-cash flows in surplus from ordinary activities		
Depreciation expense	-	-
Changes in assets & liabilities		
(Increase)/decrease in receivables	2,880	(2,364)
(Increase)/decrease in other current assets	122	2,255
(Decrease)/increase in other liabilities	4,968	(17,389)
(Decrease)/increase in payables	5,153	(1,096)
(Decrease)/increase in provisions	<u>8,845</u>	<u>(8,131)</u>
Cash flows from (used in) operations	<u>45,774</u>	<u>(3,591)</u>

**NOTE 13 RELATED PARTY TRANSACTIONS**

**(a) Key management personnel compensation**

Any person(s) having authority and responsibility for planning, directing and controlling the activities of the association, directly or indirectly, including its committee members, is considered management personnel.

Key management personnel compensation:

Short-term benefits	59,513	62,250
Post employment benefits	<u>5,300</u>	<u>5,161</u>
	<u>64,813</u>	<u>67,411</u>

**(b) Other related parties**

Other related parties include close family members of key management personnel, and entities that are controlled or jointly controlled by those key management personnel individually or collectively with their close family members.

Runnymede Technologies Pty Ltd for whom William McCormack, a committee member of this association, acts as Managing Director.

- purchase of IT equipment and IT support services	<u>1,243</u>	<u>11,121</u>
--	--------------	---------------



Camden  
Community  
Connections

## **NOTES TO THE FINANCIAL STATEMENTS FOR THE YEAR ENDED 30 JUNE 2013**

---

### **NOTE 14 ECONOMIC DEPENDANCY**

Camden Community Connections Incorporated is dependant on government funding for the majority of its revenue used to operate the business. At the date of this report the committee has no reason to believe that the various government departments will not continue to support the association.

### **NOTE 15 ASSOCIATION DETAILS**

The registered office of the association is:

Camden Community Connections Incorporated  
Narellan Library Complex  
Cnr Elyard and Queen Streets  
Narellan NSW 2567

The principal place of business is:

Camden Community Connections Incorporated  
Narellan Library Complex  
Cnr Elyard and Queen Streets  
Narellan NSW 2567

# KELLY+PARTNERS

CHARTERED ACCOUNTANTS

incorporating BCP GROUP SERVICES

## INDEPENDENT AUDIT REPORT TO THE MEMBERS OF CAMDEN COMMUNITY CONNECTIONS INCORPORATED

### Report on the Financial Report

We have audited the accompanying financial report of Camden Community Connections Incorporated, which comprises the statement of financial position as at 30 June 2013, the statement of comprehensive income, statement of changes in equity and statement of cash flows for the year then ended, notes comprising a summary of significant accounting policies and other explanatory information, and the certification by the members of the committee of the committee on the annual statements giving a true and fair view of the financial position of the association.

### Committee's Responsibility for the Financial Report

The committee of the association is responsible for the preparation of the financial report that gives a true and fair view in accordance with Australian Accounting Standards - Reduced Disclosure Requirements and the *Associations Incorporations Act 2009 (NSW)* and for such internal control as the committee determine is necessary to enable the preparation of the financial report that is free from material misstatement, whether due to fraud or error.

### Auditor's Responsibility

Our responsibility is to express an opinion on the financial reports based on our audit. We conducted our audit in accordance with Australian Auditing Standards. Those standards require that we comply with relevant ethical requirements relating to audit engagements and plan and perform the audit to obtain reasonable assurance whether the financial report is free from material misstatement.

An audit involves performing procedures to obtain audit evidence about the amounts and disclosures in the financial report. The procedures selected depend on the auditor's judgement, including the assessment of the risks of material misstatement of the financial report, whether due to fraud or error. In making those risks assessments, the auditor considers internal control relevant to the entity's preparation of the financial report that gives a true and fair view in order to design audit procedures that are appropriate in the circumstances, but not for the purpose of expressing an opinion on the effectiveness of the entity's internal control. An audit also includes evaluating the appropriateness of the accounting policies used and the reasonableness of the accounting estimates made by the committee, as well as evaluating the overall presentation of the financial report.

We believe that the audit evidence we have obtained is sufficient and appropriate to provide a basis for our audit opinion.

ACCOUNTANTS • ADVISORS • AUDITORS

KELLY PARTNERS (SOUTH WEST SYDNEY) PTY LTD ABN 17 150 234 118

Suites 1-8, Kellicar Lane, Macarthur Square, 200 Gilchrist Drive, Campbelltown NSW 2560

BCP Group Services: PO Box 417 Campbelltown NSW 2560

T [02] 4625 7711 F [02] 4628 4364 E [info@kellypartners.com.au](mailto:info@kellypartners.com.au) W [www.kellypartners.com.au](http://www.kellypartners.com.au)

LIABILITY LIMITED BY A SCHEME APPROVED UNDER PROFESSIONAL STANDARDS LEGISLATION



**Audit Opinion**

In our opinion the financial report of Camden Community Connections Incorporated is in accordance with the *Associations Incorporations Act 2009 (NSW)*, including:

- a) giving a true and fair view of the association's financial position as at 30 June 2013 and of its performance for the year ended on that date; and
- b) complying with Australian Accounting Standards - Reduced Disclosure Requirements.

**Kelly Partners (South West Sydney) Pty Ltd**

A handwritten signature in dark ink, appearing to read 'D Kuchta', written in a cursive style.

**Daniel Kuchta**

**Registered Auditor Number 335565**

**Campbelltown**

Dated this 30<sup>th</sup> day of September 2013.



**STATEMENT BY MEMBERS OF THE COMMITTEE  
FOR THE YEAR ENDED 30 JUNE 2013**

---

In the opinion of the committee the financial report:

1. Presents fairly the financial position of the Camden Community Connections Incorporated as at 30 June 2013 and its performance for the year ended on that date in accordance with Australian Accounting Standards, mandatory professional reporting requirements and other authoritative pronouncements of the Australian Accounting Standards Board.
2. At the date of this statement, there are reasonable grounds to believe that the Camden Community Connections Incorporated will be able to pay its debts as and when they fall due.

This statement is made in accordance with a resolution of the Committee and is signed for and on behalf of the Committee by:

A handwritten signature in cursive script, reading "R Monahan".

---

**Raymond Monahan**  
Chairman

A handwritten signature in cursive script, reading "M Kidd".

---

**Meran Kidd**  
Treasurer

Dated this 30th day of September 2013.



[www.camdenconnections.org.au](http://www.camdenconnections.org.au)

[www.facebook.com/camdenconnections](https://www.facebook.com/camdenconnections)