



Camden
Community
Connections

Camden Community Connections Annual Report

2013 - 2014



*Children &
Families*



Youth



Celebrating Community



Community



East Village

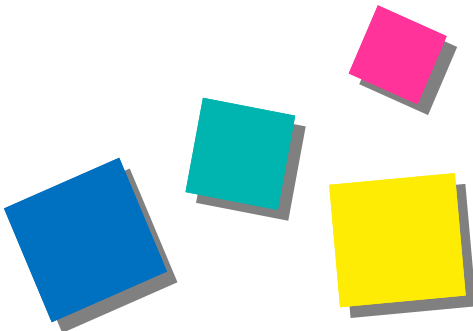


Strengthening and Empowering our Community

Contents



About Us	<i>page 2</i>
Management Committee	<i>page 3</i>
Chairperson & Manager's Report	<i>page 4-5</i>
Children's Services	<i>page 6</i>
Youth Services	<i>page 7</i>
Community Development Services	<i>page 8-9</i>
Snapshots	<i>Page 10-11</i>
East Village Spring Farm	<i>page 12</i>
Acknowledgements	<i>page 13-14</i>
Financials	<i>page 15</i>



Strengthening and Empowering our Community

About Us



About Us

Camden Community Connections (CCC) is a not-for-profit community organisation with no religious or political affiliations, based in Narellan and serving the entire Camden Local Government Area (LGA). Providing services for over 26 years, CCC was originally founded to provide community services and facilities for the new housing developments and associated growing population in and around Camden and Narellan where there were no existing services. CCC aims to strengthen and enrich the community by connecting people with local services, community activities and each other and has responded to the changing needs of the community as it has increased in size and diversity. We are committed to ensuring that we understand the people that live in our community and their needs through consultation and a key focus of our programs is to ensure equity of access for all groups in our community.

Our Vision

A strong and empowered community, where active participation in community life reduces isolation and disadvantage and improves overall quality of life

Our Mission

To build and support strong, inclusive and connected communities in established and emerging localities across the Camden Local Government Area

Our Values

Community Focused - Listening to and involving the community; focusing on providing services that are needed and that will improve the lives of residents in our community

Forward Thinking and Innovative - Embracing change and responding to the changing needs of the community; open to new ideas and innovative programs

Respectful and Inclusive - Developing services for people of all ages, backgrounds and circumstances; culturally appropriate, valuing diversity and respecting differences; ensuring access and equity in provision of services, information and employment

Professional and Accountable - Focusing on quality and continuous improvement; accountable to all stakeholders; valuing staff and volunteers; collaborative





Management Committee



Ray Monahan – Chairperson

Ray has been the Chairperson of the Management Committee since May 2013. Ray and his family reside in the local area and he is interested in ensuring there are suitable services for children and families residing in the Camden LGA. Ray is a member of Camden and Narellan Men's Sheds and the Camden Community Gardens Committee. He has been on the CCC Management Committee for five years.



Lesley Lee – Vice Chairperson

Lesley joined the CCC Management Committee in March 2013. Lesley is Program Manager Operations at Disability Macarthur and has many years' experience working in the community sector within the Macarthur region. She has a particular interest in ensuring equity of access to community services for everyone in the community.



Joan Scott – Secretary

Joan is a local resident with a long standing family history in the area. She is passionate about local issues and is affiliated with the Girl Guides and the Camden Museum. Joan is also involved in the Seniors Issues Group and has served on the CCC Management Committee for the past eight years.



Meran Kidd – Treasurer

Meran is a local resident and has operated her own bookkeeping business for over ten years. She is a member of the Association of Accounting Technicians and a Justice of the Peace. Meran has served as the Treasurer of the CCC Management Committee for the past six years.



Edward Feuerstein

Edward joined the CCC Management Committee in August 2013. Edward is a local resident who is passionate and dedicated in serving the local community. He is a company director of a Counselling, Mentoring and Training organisation located in south west Sydney. Edward has worked in the mental health, community & youth sector for over 15 years and prior to that, worked in corporate management.



Eileen Huxtable

Eileen joined the CCC Management Committee in September 2013. Eileen is a local resident who has extensive experience in Community Services and Health Management. Her main interests are her family and the local community, focusing on unemployment and training.



Judith Taylor

Judith is a local resident and is Community Services Manager at Macarthur Diversity Services as well as a Justice of the Peace. Judith has worked in the community sector for over twenty years. After many years of serving on the CCC Management Committee, including 31/2 years as Chairperson, Judith resigned from the committee in June 2014.



Sarah Portors

Sarah joined the CCC Management Committee at the beginning of 2014. She is a local resident with a long standing family history in the local area. Sarah is passionate about enabling equal access to ongoing education for all members of the community, particularly focusing on health services, both mental and physical.



William McCormack

William is a local resident and owner of several local businesses. He is a passionate supporter of our local community and brings valuable business expertise, as well as good local knowledge to his role on the CCC Management Committee. William is also a member of the Australian Institute of Company Directors. He has served on the CCC Management Committee for almost four years.

Strengthening and Empowering our Community

Chairperson & Manager Report



“...professional and committed staff.... always prepared to meet new challenges and embrace opportunities”

As we look back on the past year, we feel a sense of pride in the way that Camden Community Connections has continued to grow and deliver innovative services and programs to support and meet the needs of the increasing population residing in the Camden LGA. While our limited resources present a major challenge when seeking to meet the needs of a growing and increasingly diverse community, we remain committed to our mission of building strong, inclusive and connected communities.

An important key to our effectiveness in delivering programs and services that support and enhance the lives of people living in our community, is our team of professional and committed staff who are always prepared to meet new challenges and embrace opportunities. There have been a few changes to our team this year. Maria Esma, our longest serving member of staff, moved into the position of Community Facilitator for the community development program at East Village Spring Farm when we commenced delivering this program in July 2013. Maria continues to work one - two days each week delivering youth services, working alongside Youth Worker Teeearn Page, a welcome addition to our team.

We would like to acknowledge and thank the staff and volunteers for their commitment and initiative over this past year. We have a strong, passionate and hardworking team that is committed to achieving positive outcomes for our community. Members of our Management Committee have also worked diligently to support the organisation. They give freely of their time and expertise and for that we acknowledge and thank them. We also appreciate the funding and support we have received in the past year from the NSW government; Camden Council; and various partners in business. We look forward to their continued support and to working collaboratively with all partners and stakeholders to achieve our vision of a strong and empowered community.

This year we have continued to focus on providing relevant, quality services, programs and events and we have further extended our reach across the community. We receive positive feedback from our clients on a regular basis and we welcome all feedback, as an important aspect of our future planning is community consultation. Our communications strategy has supported a significant increase in our profile. We have promoted our organisation through quarterly networking events, community BBQs and newsletters; regular distribution of flyers for upcoming programs, activities and events; and our website and Facebook page. Regular media exposure through our local newspapers has also assisted with the promotion of programs and activities and contributed to an increased awareness of CCC and its services.

Strengthening and Empowering our Community

Chairperson & Manager Report



The highlights of our program service delivery are detailed in the individual program reports, however from a corporate perspective there are also a few noteworthy highlights. In May 2014, CCC relocated to the newly renovated Narellan Child, Family and Community Centre. This move has been extremely positive, providing better exposure and improved access to our service as well as a modern and bright working environment that has been welcomed by all staff. The new premises provide us with a much needed interview room where clients can access individual case management services and we also have an activity room where we can facilitate workshops and information sessions.

Our services expanded this year as on 1st July 2013, funded by Urban Growth NSW, we commenced delivery of the community development program at East Village Spring Farm. This new challenge was taken on with enthusiasm by the CCC team and in particular Maria Esma, the Community Facilitator. The number of East Village residents is increasing quickly and as each new resident arrives they are visited and receive a welcome pack. We have organised a number of events for East Village residents during the year, connecting them with each other. We have also focused on linking them to other residents, services and activities across the Camden LGA.

There will certainly be future challenges for our organisation as we work towards meeting the needs of a community that is quickly increasing in size and diversity. We have a professional and committed team of staff, volunteers, and management committee members as well as strong corporate governance and robust internal operating systems. A continued focus on developing a strong sustainable organisational model, together with effective community consultation and connections; sound business practices; and a clear vision for the future will ensure that we will be well positioned to meet these challenges.

Chairperson

Manager



Strengthening and Empowering our Community

Children's Services



FUNDING

The Children's Services Program (CSP) is funded by the NSW Department of Education and Communities. Other financial support was received from John Holland Pty Ltd

SUMMARY

This year we have provided a wide range of programs and activities for families and children in the Camden LGA. We have continued to partner with other local agencies to provide supported playgroups and our weekly parent run playgroup that moved in February to the new Narellan Child Family & Community Centre has seen an increase in numbers during the year. We held six workshops during the year as part of our Kids Club school holiday program, and also provided activities for children at the Camden Play Day and Kids Fun Day. We have been actively involved at Leppington Public School, providing a weekly breakfast program and supporting the Transition to School Program. Our family worker also facilitated a Parent Support Group and, in partnership with Disability Macarthur, a Positive Parenting Program (Triple P).

Increasing numbers of families with children residing in the Camden LGA provide a challenge for the limited resources of our Children Services Program. However, we remain committed to making the best use of our resources to provide quality services and activities to support families and children.

HIGHLIGHTS

The Breakfast Outreach Program at Leppington Public School has proven to be popular with 90% of the student population attending every Tuesday morning during school terms. The Australian Early Development Census (AEDC) result recently reported an increase in vulnerability of Camden children in the areas of physical health and wellbeing. It is believed that a healthy breakfast program in schools will have a positive impact on cognitive development, behavior and school attendance. We are thankful to John Holland Pty Ltd for their financial support of this program and Kelloggs who have again made a generous donation of breakfast cereal.

The Kids Club School Holiday Program has been well received by parents and children alike this year. The six workshops held during the year provided a variety of interesting and affordable activities for children and all were well attended.

We acknowledge and thank the workshop facilitators who provide us with discounted rates to enable us to keep program costs down.

In June 2014 CCC, in partnership with Disability Macarthur, CCC facilitated a Positive Parenting Program (Triple P). We were fortunate to have our Family Worker, Catherine Gonzaga, complete this training program earlier in the year with the support of Families NSW and Sector Connect. Triple P is a worldwide evidence based system of parenting intervention for parents/carers of children aged 3 to 8 years. The parents that attended this course provided positive feedback and we are planning to facilitate more programs to meet the needs of vulnerable families in the Camden LGA.

Breakfast Outreach Program Leppington Public School	July 2013 - June 2014
Bright Eyes Supported Playgroup in partnership with Benevolent Society	July 2013- June 2014
Bright Stars Playgroup	July 2013- June 2014
Camden Area Parent Support Group	July 2013- August 2014
Camden Kids Fun Day	11th September 2013
Camden Play Day	18th May 2014
Kids Club School Holiday Program	Martial Arts Workshop 3rd July 2013 Basketball Clinic 10th July 2013 Cooking Workshop 25 th September 2013 Hip Hop Dancing 2 nd October 2013 Self Defense Workshop 16 th April 2014 Circus Workshop 23 rd April 2014
Playlinks Supported Playgroup in partnership with Northcott Disability Services & Benevolent Society	July 2013 – June 2014
Transition to School Program at Leppington Public School	July 2013 - December 2013
Triple P (Positive Parenting Program) in partnership with Disability Macarthur	June 2014

"The staff are always welcoming upon arrival.....They have a well set program each week for the children with various activities. I think it is great that the supported playgroups have special resource persons whether it is the librarian, RSPCA or the speech therapist. There is a wealth of information available about related services provided within the Camden area."

Nicole, playgroup parent

Strengthening and Empowering our Community

Youth Services



FUNDING

The major source of funding for our Youth Service Early Intervention and Placement Prevention (EIPP) program comes from NSW Department of Family and Community Services (FACS). The EIPP programs offers young people, ages 12-18 years and/ or their families living in the Camden Local Government Area (LGA) case management, information, support, and referrals. During 2013-2014 our youth services were also funded by:

Camden Council

Narellan Rotary

NSW Office of Communities Veterans' Affairs

The aim of this day is to promote confidence and self-esteem among girls and young women and its popularity and the support we receive from local high schools and the community more generally will ensure it will be an annual event on our calendar.

Funded by Camden Council, CCC developed a Job Preparation program that has so far been successfully delivered to over 40 local young people. The program provides participants with job ready skills and some participants have obtained employment soon after completing the workshop.

SUMMARY

The CCC Youth Service team of experienced and committed staff have worked tirelessly during the past year to strengthen our youth programs to meet the needs of the increasing number of young people residing in the Camden LGA. We have focused on developing relationships with local high schools and we continue to work with schools; local police; Camden Council; local businesses; and other community organisations to engage and support young people in our community.

It has been an exciting and busy year, and as our youth program continues to grow and strengthen, we are reaching more and more young people in the community and engaging them with services. Participation rates in all of our programs for young people have increased and in particular there has been a significant rise in the number of young people accessing individual case management.

EVENTS | PROGRAMS | SERVICES

Breakfast Program Camden High	July 2013- Ongoing
Camden Anzacs DVD	November 2013 - August 2014
Case Management	Ongoing
Girls Program – local high schools	July 2013 - Ongoing
International Girls Day	November 2013
Job Preparation Program	May 2014 - Ongoing
Narellan Youth Outreach Program	October 2013-April 2014
Youth Week – Beauty Within Workshop	April 2014

HIGHLIGHTS

The CCC girls program, developed to provide opportunities and support for disengaged female students, has grown rapidly over the past year and is now being delivered at Mt Annan, Camden, and Elizabeth Macarthur High schools. We are currently reviewing and redesigning this program and we are excited that from 2015 the program will be delivered in up to 4 local high schools.

Camden Council provided funding to support a Youth Week event and this year we facilitated a beauty workshop targeting young people with a disability. This innovative event was enjoyed by all including the NSW Youth Week Coordinator who visited the workshop. The International Girls' Day event, held in November at Mt Annan High School, was again extremely popular with girls from other local high schools also attending.



Strengthening and Empowering our Community

Community Development Services



FUNDING

The major source of funding for our Community Development Services, Community Builders, comes from NSW Department of Family and Community Services (FACS).

Our community program aims to strengthen, enrich and empower the community of Camden by providing a wide range of services for all groups in our community.

During 2013-2014 our community programs were also funded by:

NSW Government Community Building Partnership Program, Camden Council; Carers NSW, IMB, MDSI, NRMA

SUMMARY

It has been a busy and vibrant year for our Community Development Services. Offering a wide variety of innovative programs, from cultural bus tours; information sessions for seniors; cooking workshops; an art exhibition; and community BBQs and networking events, we have successfully engaged and provided services for over twenty thousand people residing in the Camden LGA.

This year we have strengthened current networks while creating new partnerships with other community service providers and organisations such as Lifeline, the Macarthur Centre for Sustainable Living, Oran Park Town, Camden RSL and local schools and library services. We have continued to focus on lifting the profile of CCC and many of our activities and events have featured in the local newspapers. An increased awareness of our organisation has resulted in greater numbers of people accessing our services. Many of our programs and activities run at maximum capacity and in the case of bus tours for seniors we have been unable to meet the demand, with waiting lists for most tours. We have also seen an increased number of people seeking support services and individual case management.

HIGHLIGHTS

Following the success of our Cultural Bus tours for seniors last year, we have expanded this program in 2013-14 to include an extended schedule of tours and a larger bus that has 23 seats. Destinations have included the Sydney Jewish Museum, Gledswood Estate, Joadja Creek, and Vaucluse House. We have also continued our quarterly shopping trips and our bus service to Leppington Forest Lawn Cemetery which is now quarterly.

In response to our ongoing work and consultation with seniors in the community CCC began working in partnership with various services and organisations such as the Black Dog Institute, Macarthur Legal, Alzheimer's Australia, Centrelink and Camden Council to deliver a series of relevant information sessions for seniors in the Camden LGA.

To celebrate Seniors Week in March 2014, Fifty five local seniors enjoyed a 50s Themed High tea served by CCC staff and students from Mount Annan High School. The seniors played bingo as they enjoyed homemade sandwiches and cakes, small gifts and a live performance provided by Camden Community Band. CCC received positive feedback from participants and in particular, the students were highly commended.

With funding from IMB, we have been running an intergenerational art therapy program for women in the Camden LGA. CCC used some of the artwork created during the program to produce a 2014 Calendar which was sold to fund further art programs. An art exhibition was also held at CCC's Annual General Meeting in 2013.

CCC received funding from NRMA to run a series of road safety programs during 2013 at Campbelltown Bicycle Centre. The program for children 5 to 12 years old was designed to raise awareness of road safety. Participants learned about the importance of road safety as they developed the skills and confidence to ride bicycles.

GROUPS

Camden Just Walk It Walking Group

The Camden Just Walk It Group started in 2000.

The Group walks every Tuesday along Camden cycleway.

Mount Annan Wanderers, Walking for Pleasure

The Mount Annan Wanderers Group started in 2003

The Group walks every Friday at Mount Annan Botanic Gardens

Macarthur Spinners and Weavers

Macarthur Spinners and Weavers Group started in 2002.

The Group meets on a Friday at the Camden CWA Building.

Polymyalgia Rheumatica Support Group (PMR)

The PMR Group meets monthly from February- November CCC meeting room.

A Strong and Empowered Community

Community Development Services



Events		Date
Bunnings Community BBQ		9 th November 2013
		10 th June 2014
Camden Kids Fun Day		11 th September 2013
Camden Play Day		18th June 2014
CCC Quarterly Community BBQ		1st April 2014
CCC Quarterly Networking Event	Food Security – Making Choices for a Sustainable future	27 th August 2013
	CCC AGM & Art Exhibition	27 th November 2013
	Fit for Life	26 th February 2014
	Medicare Local	28 th June 2014
Carers Week Art Therapy		16 th October 2013
Mental Health Month -Laughter Yoga		23rd October 2013
Mother's Day Luncheon		8th May 2014
Narellan Rhythm's Festival		19 th October 2012
R U OK Community Breakfast		12th September 2013
Seniors Week TAKE 5 High Tea		24 th March 2014
Programs		Date
Active Over Fifties	Tai Chi Harrington Park	July 2013 – June 2014
	Tai Chi Narellan	July 2013 - June 2014
	Phoenix Health Club	July 2013 - June 2014
Bus Tours for Seniors	Leppington Forest Lawn	July 2013 – June 2014 Quarterly
	Cultural Bus Tours 2013	6 th , 27 th September, 4 th October, 1 st November, 3 rd , 10 th December
	Cultural Bus Tours 2014	14 th , 21 st March, 4 th April, 23 rd May, 20 th June, 11 th , 18 th July
	Shopping Trips	5 th July, 15 th November 2013, 14th March 2014
Christmas Giving Tree Program		November 2013 – December 2013
Cooking Club		23 rd October, 20 th November 2013
		2 nd April, 18 th June 2014
Connecting Women By the Stroke of a Brush		July - September 2013, February – March 2014,
Connecting Women Sketching Program		June 2014
NRMA Road Safety Program		August 2013 - June 2014
Sessions for Seniors		6 th August, 10 th September, 15 th October 19 th November 2013; 15 th April, 10 th June 2014
Services		Date
Case Management		As requested
Centre Facilities (Phone, Fax, Photocopier)		Ongoing
Information and Referral		Ongoing
Macarthur Legal		July 2013 – June 2014 Monthly
Macarthur No Interest Loans Scheme (NILS)		July 2013 - Dec 2013
Sydney Water Payment Assistance Scheme		July 2013 – June 2014
Tax Help		July 2013 - October 2013

Strengthening and Empowering our Community



CONNECTING WOMEN

By the Stroke of a Brush
July 2013



LAUGHTER YOGA

October 2013



THURSDAY NIGHT OUTREACH

December 2013



YOUTH WEEK

Beauty Workshop
April 2014



NRMA Give Way The Right Way

August 2013



HARRINGTON PARK TAI CHI CLASS

October 2013



Strengthening and Empowering our Community

SENIORS WEEK 'TAKE 5 HIGH TEA'

March 2014



INTERNATIONAL GIRLS DAY

November 2013



COOKING CLUB

April 2014



QUARTERLY COMMUNITY BBQ

April 2014



KIDS CLUB

April 2014



CULTURAL BUS TOUR

Bowral Tulip Festival
September 2013

Strengthening and Empowering our Community

East Village Spring Farm



Funding

The Community Development Program for East Village Spring Farm is funded by Urban Growth NSW. The initial contract period is for two years and the project commenced on the 1st July 2013.

Summary

The past year was exciting for CCC and especially the East Village Community Facilitator as we began delivering the Community Development Program in the new residential development at East Village Spring Farm. The program involves welcome visits to all new residents as well as delivery of activities and events aimed at building a cohesive and connected community. Another important aspect of the program is to link East Village residents with others in the Camden LGA. There will be 1400 houses built at East Village and there are over 200 houses occupied to date. As the estate expands we are committed to supporting the residents and we are looking forward to another great year ahead, meeting & engaging new families and providing innovative programs for the residents of East Village.

Highlights

Winter Christmas was our first community event held at East Village. On the 16th of August 2014, over sixty people attended this family event held at the Sales Office. The children enjoyed face painting, and Santa and his elf provided lolly bags for all. A local singer/guitarist sang Christmas carols, creating a relaxed and festive atmosphere for the residents. The night was a great opportunity for the residents to mingle and connect with each other.

Halloween Trick or Treating was held on the 31st October 2014 and over 50 children participated. Everyone looked amazing in their costumes and the children, along with their parents, enjoyed the games, and trick or treating. This event involved many residents in the community and feedback was extremely positive. On the 6th Of December 2013 the residents came to celebrate at the first East Village Christmas party. The atmosphere was festive and the weather was beautiful. New and existing residents came along and joined in the fun together. The children enjoyed the jumping castle, face painting, balloon making and a visit from Santa Claus. Occasions such as this, as well as quarterly Meet & Greet events, foster a sense of belonging and encourage a sense of community where neighbours get to know each other and friendships are formed.

Community BBQ in Partnership with Benevolent Society	14th August 2013
Meet & Greet Winter Christmas	16th August 2013
A Day in the Park BBQ	28th September 2013
Halloween Trick or Treating	31 st October 2013
6 Weeks Fitness Program	November- December 2013
Christmas Giving Tree	November- December 2013
East Village Christmas Party	6th December 2013
Neighbour Day BBQ	30th March 2014
Easter Hunt & Petting Zoo	10th April 2014
Mother's Day Luncheon	8th May 2014
Lend a Hand Donate a Can Initiative	1st June-August 2014



Acknowledgements

The CCC Management Committee would like to thank all CCC staff and volunteers for their support during the past year.

Staff

Catherine Gonzaga

Maria Esma

Sue Robinson

Elleneta Hocking

Mark Jackson

Tearn Page



Catherine Gonzaga

Elleneta Hocking

Maria Esma

Mark Jackson

Sue Robinson

Tearn Page

Volunteers

Abbey Felice

Heulwen Dixon

Paige Solly

Amaleena Amir

Kok Ong

Taylor Blackman

Anna Phrakasone

Mahum Afraz

Tegan McCallie

Anneyshia Brewty

Melissa Von Senden

Tegan Morley

Caitlin Stoddart

Nathan Biddle

Heidi Midcalf

Neel Gobin

CCC gratefully acknowledges the following people, partnership organisations, and government agencies for their financial or in kind support during 2013-2014

A2 Milk

Camden Council Library Services

Career Origin

ADHC

Camden High School

Carers NSW

Australian Taxation Office

Camden Just Walk It

Chris Patterson, State Member for

Bakers Delight Narellan Town Centre

Camden RSL Sub- Branch

Disability Macarthur

Bringelly Quality Meats

Camden Seniors Issues Group

Dumaresq Street Cinemas

Bunnings Narellan

Camden Spinners and Weavers

Elderslie High School

Cake Biz Narellan

Camden Sports Club

Heart Foundation

Camden Aglow

Camden Town Farm

Home Quarters Camden

Camden Civic Centre

Campbelltown Performing Arts High School

IMB

Camden Community Band

Jo Wells

Camden Council

John Holland

Strengthening and Empowering our Community

Acknowledgements



Karitane Camden	NSW Department of Family and Community Services	School
Kelloggs	NSW Office of Communities Veterans' Affairs	Josh Bannister – Camden High School
Lara Symkowiak, Mayor of Camden	NSW Police	Mary Scott – Elizabeth Macarthur High School
LCSA	Oran Park Town Community Development Program	Samantha Harkness - Elizabeth Macarthur High School
Lees Massage & Acupuncture	Phoenix Health Club	ANZACS
Legal Aid NSW	PMR Group	Bert Ryan
Leppington Forest Lawn Cemetery	Russell Matheson, Federal MP for Macarthur	Con Diomis
Leppington Public School	Rydges Campbelltown	Ken Bell
Lifeline	Sector Connect	Laurie Giles
Lolliland	Select Wholesale Meats Narellan	Len Carter
Macarthur Advertiser	South West Sydney Area Health	Major Stuart Pemberton
Macarthur Anglican College	South West Sydney Family Referral Service – Uniting care Burnside	Rob Maguire
Macarthur Centre for Sustainable living	South Western Sydney Medicare Local	PRODUCER/VIDEOGRAPHER
Macarthur Chronicle	The Benevolent Society	Ian Pritchard
Macarthur Community Access Care Pair	The Black Dog Institute	NARRATOR
Macarthur Disability Services	The District Reporter	Steve Wisbey
Macarthur Diversity Services	The Junction Works	FILM LOCATION
Macarthur Legal Centre	The Pit Personal Defence Studios	Studley Park House
Macarthur NILS	Traxside Youth Health Service	Paul & Vickie Gregson
McDonalds Macarthur	UWS School of Medicine	CAMDEN HISTORIANS
Morpheus Academy	Vivid Hair Narellan	Camden Remembers Website
Mother Hubbard's Cupboard	W.I.L.M.A. Women's Health Centre	Christine Robinson
Mt Annan High School	Woolworths Narellan	Ray Herbert
Mt Annan Leisure Centre	Youth Connections MTC Australia	MEMORY MAN
Mt Annan Wanderers	Youth Solutions Macarthur	Bob Mitchell
My Gateway	ANZAC DVD	VISUAL & AUDIO
Narellan Community Health Centre	STUDENTS	Australian Government Department of Defence
Narellan Congregational Community Services	Andrew Loomes - Elderslie High School	Australian War Memorial
Narellan Newsagency	Angus Key – Macarthur Anglican School	Buy Out Footage
Narellan Rotary Club	Ani Hoxha – Elderslie High School	Kent Palmer
Narellan Town Centre Management	Deni Hoxha – Elderslie High School	National Film and Sound Archive
Northcott Disability Services	Hannah Trethewy – Elderslie High	Wayne Ryan
NRMA		
NSW Department of Education & Communities		

Financials

Treasurers Report

Camden Community Connections has reported a net surplus of \$44,498 for the year ending 30 June 2014.

Total Revenue: \$511,500

Total Expenses: \$467,002

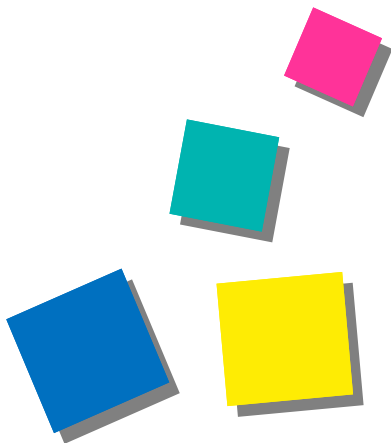
The closing cash balance as at 30 June was \$272,431 with a retained surplus of \$204,355.

Full details are available in the audited Financial Statements included in the annual report.



William McCormack
Treasurer

NB: (Meran Kidd was Treasurer for the period July 2013 - June 2014. Meran resigned from the CCC Management Committee in August 2014 and William McCormack was appointed as Treasurer)





Camden
Community
Connections

**STATEMENT OF COMPREHENSIVE INCOME
FOR THE YEAR ENDED 30 JUNE 2014**

	Note	2014 \$	2013 \$
Revenue from ordinary activities	2	511,500	414,422
Depreciation expense	3	-	-
Employee benefits expense		(280,955)	(229,927)
Other expenses from ordinary activities	3	(186,047)	(160,689)
Surplus from ordinary activities before income tax		44,498	23,806
Income tax expense relating to ordinary activities	1(a)	-	-
Net surplus from ordinary activities after income tax		44,498	23,806
Other comprehensive income			
Net gain on revaluation of financial assets		-	-
Other comprehensive income for the year, net of tax		-	-
Total comprehensive income for the year		44,498	23,806
Total comprehensive income attributable to members of the entity		44,498	23,806

The accompanying notes form part of these financial statements.



Camden
Community
Connections

STATEMENT OF FINANCIAL POSITION
AS AT 30 JUNE 2014

	Note	2014 \$	2013 \$
CURRENT ASSETS			
Cash and cash equivalents	4	272,431	236,187
Trade and other receivables	5	7,679	290
Other current assets	6	3,749	2,985
Total current assets		283,859	239,462
NON-CURRENT ASSETS			
Property, plant and equipment	7	-	-
Total non-current assets		-	-
Total assets		283,859	239,462
CURRENT LIABILITIES			
Trade and other payables	8	31,483	27,712
Other liabilities	9	22,284	36,549
Provisions	10	25,737	15,344
Total current liabilities		79,504	79,605
Total liabilities		79,504	79,605
Net assets		204,355	159,857
Represented by			
EQUITY			
Retained surplus	11	204,355	159,857
Total equity		204,355	159,857

The accompanying notes form part of these financial statements.



Camden
Community
Connections

STATEMENT OF CHANGES IN EQUITY
AS AT 30 JUNE 2014

	Retained Earnings \$	Total Equity \$
Balance as at 1 July 2012	136,051	136,051
Surplus attributable to members	23,806	23,806
Balance as at 30 June 2013	159,857	159,857
Surplus attributable to members	44,498	44,498
Balance as at 30 June 2014	204,355	204,355

The accompanying notes form part of these financial statements.



Camden
Community
Connections

**STATEMENT OF CASH FLOWS
FOR THE YEAR ENDED 30 JUNE 2014**

	Note	2014 \$	2013 \$
CASH FLOW FROM OPERATING ACTIVITIES			
Receipts from members and governments		498,834	387,335
Payments to suppliers		(475,256)	(350,701)
Interest received		12,666	9,140
Net cash provided by (used in) operating activities	12b	36,244	45,774
CASH FLOW FROM INVESTING ACTIVITIES			
Payment for property, plant & equipment		-	-
Net cash provided by (used in) investing activities		-	-
Net increase (decrease) in cash held		36,244	45,774
Cash at the beginning of the year		236,187	190,413
Cash at the end of the year	12a	272,431	236,187

The accompanying notes form part of these financial statements.



Camden
Community
Connections

NOTES TO THE FINANCIAL STATEMENTS FOR THE YEAR ENDED 30 JUNE 2014

NOTE 1 STATEMENT OF SIGNIFICANT ACCOUNTING POLICIES

Camden Community Connections Incorporated has elected to early adopt the Australian Accounting Standards - Reduced Disclosure Requirements as set out in AASB 1053: *Application of Tiers of Australian Accounting Standards* and AASB 2010-2: *Amendments to Australian Accounting Standards arising from Reduced Disclosure Requirements*.

The financial statements are general purpose financial statements that have been prepared in accordance with Australian Accounting Standards - Reduced Disclosure Requirements of the Australian Accounting Standards Board (AASB) and the *Associations Incorporations Act 2009 (NSW)*. The association is a not-for-profit entity for financial reporting purposes under Australian Accounting Standards.

Australian Accounting Standards set out accounting policies that the AASB has concluded would result in financial statements containing relevant and reliable information about transactions, events and conditions. Material accounting policies adopted in the preparation of these financial statements are presented below and have been consistently applied unless otherwise stated.

The financial statements, except for the cash flow information, have been prepared on an accruals basis and are based on historical costs, modified, where applicable, by the measurement at fair value of selected non-current assets, financial assets and financial liabilities.

(a) Income Tax

The Association is exempt from income tax as it is run as a not-for-profit association.

(b) Property, Plant & Equipment

Each class of property, plant & equipment is carried at cost or fair value as indicated less, where applicable, any accumulated depreciation and impairment losses.

The carrying amount is reviewed annually by the committee to ensure it is not in excess of the recoverable amount from those assets. The recoverable amount is assessed on the basis of the expected net cash flows which will be received from the assets employment and subsequent disposal. The expected cash flows have not been discounted to present values in determining recoverable amounts.

The depreciable amount of all fixed assets are depreciated or amortised over their estimated useful lives from the time the asset is held ready for use.

(c) Cash

Cash and cash equivalents include cash on hand and at call deposits with banks or financial institutions.

(d) Revenue

Revenue from the sale of goods and rendering of services is recognised upon the delivery of the goods or service to customers and members.



Camden
Community
Connections

**NOTES TO THE FINANCIAL STATEMENTS
FOR THE YEAR ENDED 30 JUNE 2014**

NOTE 1 STATEMENT OF SIGNIFICANT ACCOUNTING POLICIES

(d) Revenue (continued)

Grant revenue is received based on the grant conditions being met. All revenue is recognised net of GST.

(e) Goods & Services Tax (GST)

Revenues, expenses and assets are recognised net of the amount of GST, except where the amount of GST incurred is not recoverable from the Australian Taxation Office. In these circumstances the GST is recognised as part of the cost of acquisition of the asset or as part of an item of the expense. Receivables and payables in the statement of financial position are shown inclusive of GST.

(f) Employee Benefits

Provision is made for Camden Community Connections Incorporated's liability for employee benefits arising from services rendered by employees to the end of the reporting period. Employee benefits that are expected to be settled within one year have been measured at the amounts expected to be paid when the liability is settled.

Employee benefits payable later than one year have been measured at the present value of the estimated future cash outflows to be made for those benefits. In determining liability, consideration is given to employee wage increases and the probability that the employee may not satisfy vesting requirements. Those cashflows are discounted using market yields on national government bonds with terms to maturity that match the expected timing of cashflows.



Camden
Community
Connections

**NOTES TO THE FINANCIAL STATEMENTS
FOR THE YEAR ENDED 30 JUNE 2014**

	2014	2013
	\$	\$
NOTE 2 REVENUE		
Operating activities		
Advertising and other income	6,968	2,688
CCC Support	7,000	-
Fundraising	6,740	6,955
Grants	381,010	294,750
Resources	673	769
Management fees received	77,438	79,500
Membership fees	627	145
Program income	1,464	2,528
	<u>481,920</u>	<u>387,335</u>
Non-operating activities		
CAYS - Provisions recouped	-	3,000
Donations	7,209	6,540
Interest	12,666	9,140
Transitional Funding	9,705	8,407
	<u>29,580</u>	<u>27,087</u>
Total revenue	<u>511,500</u>	<u>414,422</u>

NOTE 3 SURPLUS FROM ORDINARY ACTIVITIES

**Surplus from ordinary activities before income tax
expense has been determined after:**

(a) Expenses

Depreciation of non-current assets
- computers & other equipment

Other Expenses

Auditors remuneration	5,000	5,455
Bus expenses	3,281	4,679
Internet, phone & fax	4,706	4,971
Insurance	5,350	4,388
Management fee	77,437	79,500
Other program costs	32,532	12,537
Promotion	1,925	1,127
Rent	13,055	15,820
Other	42,761	32,212
	<u>186,047</u>	<u>160,689</u>



Camden
Community
Connections

**NOTES TO THE FINANCIAL STATEMENTS
FOR THE YEAR ENDED 30 JUNE 2014**

	2014	2013
	\$	\$
NOTE 4 CASH AND CASH EQUIVALENTS		
Current		
Cheque account - Westpac	1,868	15,044
Cash reserve account - Westpac	104,793	64,113
IMB general account	61	-
IMB Term Deposit	50,000	100,000
IMB Term Deposit	65,529	50,000
IMB Term Deposit	50,000	7,000
Cash on hand	180	30
	<u>272,431</u>	<u>236,187</u>
NOTE 5 TRADE AND OTHER RECEIVABLES		
Trade debtors	6,682	140
Accrued revenue	832	-
Other debtors	165	150
	<u>7,679</u>	<u>290</u>
NOTE 6 OTHER CURRENT ASSETS		
Prepayments	<u>3,749</u>	<u>2,985</u>
NOTE 7 PROPERTY, PLANT & EQUIPMENT		
Bus & trailer	46,242	46,242
Less accumulated depreciation	<u>(46,242)</u>	<u>(46,242)</u>
	-	-
Furniture & fixtures - at cost	5,879	5,879
Less accumulated depreciation	<u>(5,879)</u>	<u>(5,879)</u>
	-	-
Computers & computer equipment - at cost	13,731	13,731
Less accumulated depreciation	<u>(13,731)</u>	<u>(13,731)</u>
	-	-
	<u>-</u>	<u>-</u>



Camden
Community
Connections

**NOTES TO THE FINANCIAL STATEMENTS
FOR THE YEAR ENDED 30 JUNE 2014**

NOTE 7 PROPERTY, PLANT & EQUIPMENT (Continued)

	2014	2013
(a) Summary of movements in carrying amounts	\$	\$
Balance at beginning of year	-	-
Additions	-	-
Disposals	-	-
Depreciation expense	-	-
Amounts written off	-	-
Carrying amount at the end of the year	<u>-</u>	<u>-</u>

NOTE 8 TRADE AND OTHER PAYABLES

Current

Trade creditors	1,624	2,879
BAS Liability & GST payable	18,591	6,039
PAYG Withholding	-	8,372
Credit cards	1,254	1,303
Accrued expenses	5,014	2,733
Superannuation payable	-	1,386
Accrued audit fee	5,000	5,000
	<u>31,483</u>	<u>27,712</u>

NOTE 9 OTHER LIABILITIES

Current

Prepaid funding	12,671	17,231
CAYS - funding accrued	9,613	9,613
Transitional funding	-	9,705
	<u>22,284</u>	<u>36,549</u>

NOTE 10 PROVISIONS

Current

Provision for annual leave	14,215	8,139
Provision for long service leave	11,522	7,205
	<u>25,737</u>	<u>15,344</u>

NOTE 11 RETAINED SURPLUS

Movements during year

Retained surplus at the beginning of the year	159,857	136,051
Surplus from ordinary activities	44,498	23,806
Retained surplus at the end of the year	<u>204,355</u>	<u>159,857</u>



Camden
Community
Connections

**NOTES TO THE FINANCIAL STATEMENTS
FOR THE YEAR ENDED 30 JUNE 2014**

	2014 \$	2013 \$
NOTE 12 CASH FLOW INFORMATION		
(a) Reconciliation of cash		
Cash at the end of the financial year as shown in the statement of cash flows is reconciled to the related items in the statement of financial position as follows:		
Cash at bank	<u>272,431</u>	<u>236,187</u>
(b) Reconciliation of cash flow from operations with surplus from ordinary activities after income tax		
Surplus from ordinary activities after income tax	44,498	23,806
Non-cash flows in surplus from ordinary activities		
Depreciation expense	-	-
Changes in assets & liabilities		
(Increase)/decrease in receivables	(7,389)	2,880
(Increase)/decrease in other current assets	(764)	122
(Decrease)/increase in other liabilities	(14,265)	4,968
(Decrease)/increase in payables	3,771	5,153
(Decrease)/increase in provisions	10,393	8,845
Cash flows from (used in) operations	<u>36,244</u>	<u>45,774</u>

NOTE 13 ECONOMIC DEPENDANCY

Camden Community Connections Incorporated is dependant on government funding for the majority of it revenue used to operate the business. At the date of this report the committee has no reason to believe that the various government departments will not continue to support the association.

NOTE 14 ASSOCIATION DETAILS

The registered office and principal place of business of the association is:

Camden Community Connections Incorporated
16 - 24 Queen Street
Narellan NSW 2567

KELLY+PARTNERS

CHARTERED ACCOUNTANTS

incorporating **BCP GROUP SERVICES**

INDEPENDENT AUDIT REPORT TO THE MEMBERS OF CAMDEN COMMUNITY CONNECTIONS INCORPORATED

Report on the Financial Report

We have audited the accompanying financial report being a special purpose financial report, of Camden Community Connections Incorporated, which comprises the statement of financial position as at 30 June 2014, the statement of comprehensive income, statement of changes in equity and statement of cash flows for the year then ended, notes comprising a summary of significant accounting policies and other explanatory information, and the officers' assertion statement.

Committee's Responsibility for the Financial Report

The committee of Camden Community Connections Incorporated are responsible for the preparation of the financial report and have determined that the basis of preparation described in Note 1, is appropriate to meet the requirements of the Associations Incorporation Act (NSW) 2009 and Associations Incorporation Regulation (NSW) 2010 and is appropriate to meet the needs of the members. The officers' responsibility also includes such internal control as the officers determine is necessary to enable the preparation and fair presentation of a financial report that is free from material misstatement, whether due to fraud or error.

Auditor's Responsibility

Our responsibility is to express an opinion on the financial report based on our audit. We conducted our audit in accordance with Australian Auditing Standards. Those standards require that we comply with relevant ethical requirements relating to audit engagements and plan and perform the audit to obtain reasonable assurance about whether the financial report is free from material misstatement.

An audit involves performing procedures to obtain audit evidence about the amounts and disclosures in the financial report. The procedures selected depend on the auditor's judgement, including the assessment of the risks of material misstatement of the financial report, whether due to fraud or error. In making those risk assessments, the auditor considers internal control relevant to the entity's preparation and fair presentation of the financial report in order to design audit procedures that are appropriate in the circumstances, but not for the purpose of expressing an opinion on the effectiveness of the entity's internal control. An audit also includes evaluating the appropriateness of accounting policies used and the reasonableness of accounting estimates made by management, as well as evaluating the overall presentation of the financial report.

We believe that the audit evidence we have obtained is sufficient and appropriate to provide a basis for our audit opinion.

ACCOUNTANTS • ADVISORS • AUDITORS

KELLY PARTNERS (SOUTH WEST SYDNEY) PTY LTD ABN 17 150 234 138

Suites 1-8, Kellicar Lane, Macarthur Square, 200 Gilchrist Drive, Campbelltown NSW 2560

BCP Group Services: PO Box 417 Campbelltown NSW 2560

T [02] 4625 7711 F [02] 4628 4364 E info@kellypartners.com.au W www.kellypartners.com.au

LIABILITY LIMITED BY A SCHEME APPROVED UNDER PROFESSIONAL STANDARDS LEGISLATION



Audit Opinion

In our opinion the financial report of Camden Community Connections Incorporated is in accordance with the *Associations Incorporations Act 2009 (NSW)*, including:

- a) giving a true and fair view of the association's financial position as at 30 June 2014 and of its performance for the year ended on that date; and
- b) complying with Australian Accounting Standards - Reduced Disclosure Requirements.

Kelly Partners (South West Sydney) Pty Ltd



Daniel Kuchta

Registered Auditor Number 335565

Campbelltown

Dated this 27th day of September 2014.



Camden
Community
Connections

**STATEMENT BY MEMBERS OF THE COMMITTEE
FOR THE YEAR ENDED 30 JUNE 2014**

In the opinion of the committee the financial report:

1. Presents fairly the financial position of the Camden Community Connections Incorporated as at 30 June 2014 and its performance for the year ended on that date in accordance with Australian Accounting Standards, mandatory professional reporting requirements and other authoritative pronouncements of the Australian Accounting Standards Board.
2. At the date of this statement, there are reasonable grounds to believe that the Camden Community Connections Incorporated will be able to pay its debts as and when they fall due.

This statement is made in accordance with a resolution of the Committee and is signed for and on behalf of the Committee by:

Raymond Monahan
Chairman

William McCormack
Treasurer

Dated this 27th day of September 2014





www.camdenconnections.org.au

www.facebook.com/camdenconnections