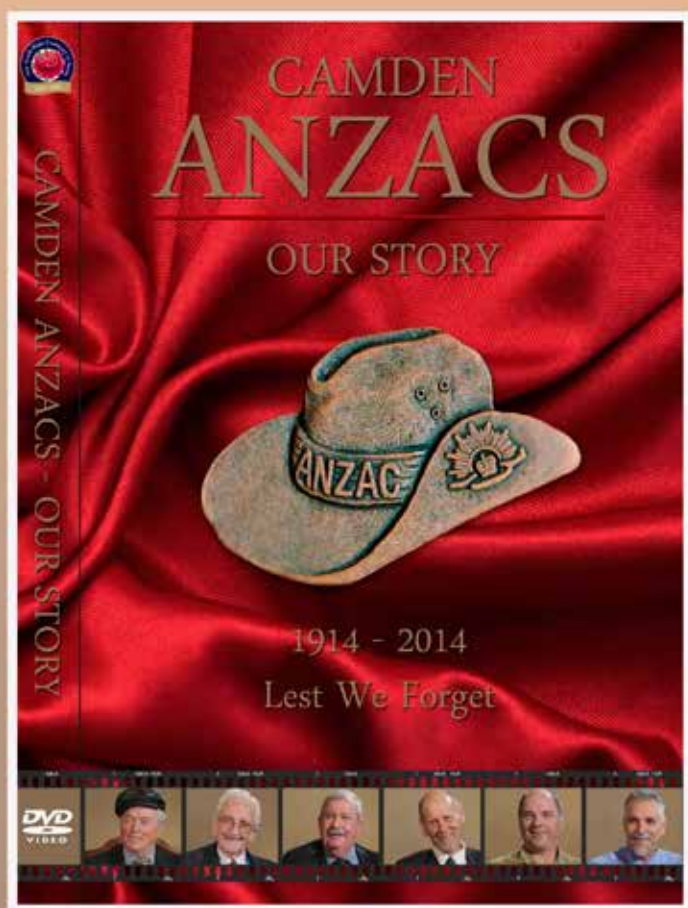


Camden Community Connections Annual Report 2014 - 2015



Lest we forget



Contents

About Us	<i>page 4</i>
Management Committee	<i>page 5</i>
Chairperson & Manager's Report	<i>page 6-7</i>
Children's Services	<i>page 8</i>
Youth Services	<i>page 9</i>
Community Development Services	<i>page 10-11</i>
ANZAC Centenary	<i>page 12-13</i>
East Village Spring Farm / Bardia Edmondson Park	<i>page 14</i>
Acknowledgements	<i>page 15-16</i>
Financials	<i>page 17</i>



About Us

About Us

Camden Community Connections (CCC) is a not-for-profit community organisation with no religious or political affiliations that has provided community services for over 27 years. CCC is based in Narellan and provides services across the Camden and Campbelltown Local Government Areas (LGAs). CCC was originally founded to provide community services and facilities for the new housing developments and associated growing population in and around Camden and Narellan where there were no existing services. Today, CCC aims to strengthen and enrich communities by connecting people with local services, community activities and each other. Our local knowledge and experience, combined with our commitment to community consultation, and focus on equity of access to all groups, ensures that we are able to respond effectively to the needs of expanding and increasingly diverse communities.

Our Vision

A strong and empowered community, where active participation in community life reduces isolation and disadvantage and improves overall quality of life

Our Mission

To build and support strong, inclusive and connected communities in established and emerging localities.

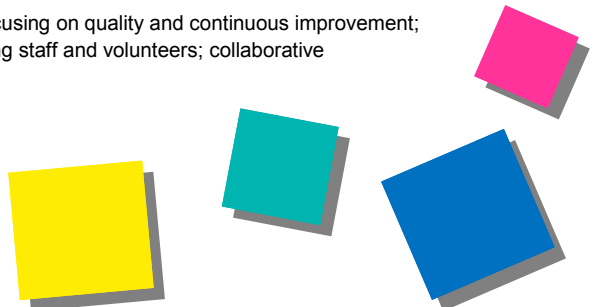
Our Values

Community Focused - Listening to and involving the community; focusing on providing services that are needed and that will improve the lives of residents in our community

Forward Thinking and Innovative - Embracing change and responding to the changing needs of the community; open to new ideas and innovative programs

Respectful and Inclusive - Developing services for people of all ages, backgrounds and circumstances; culturally appropriate, valuing diversity and respecting differences; ensuring access and equity in provision of services, information and employment

Professional and Accountable - Focusing on quality and continuous improvement; accountable to all stakeholders; valuing staff and volunteers; collaborative



Management Committee

Lesley Lee – Chairperson

Lesley joined the CCC Management Committee in March 2013 and has been Chairperson since November 2014. Lesley is Program Manager Operations at Disability Macarthur and has many years experience working in the community sector within the Macarthur region. She has a particular interest in ensuring equity of access to community services for everyone in the community.

Helen Byfield Fleming – Vice Chairperson

Helen joined the CCC Management Committee in November 2014. After a long career with TAFE NSW, Helen moved on to take up the role of Centre Manager with the Macarthur Centre for Sustainable Living which, with Helen's expertise in education and event organisation, has undergone rapid expansion. Helen is passionate about education and sustainable living.

Joan Scott – Secretary

Joan is a local resident with a long standing family history in the area. She is passionate about local issues and is affiliated with the Girl Guides and the Camden Museum. Joan is also involved in the Seniors Issues Group and has served on the CCC Management Committee for the past nine years.

Ken Patterson – Treasurer

Ken joined the CCC Management Committee in November 2014. He is a retired accountant who has worked extensively in not for profit organisations. Ken is interested in advancing community projects particularly those that assist persons with a disability.

Con Diomis

Con joined the CCC Management Committee in November 2014. He is the National Key Accounts Manager at Forbo Flooring Systems and is the Vice president of the Camden RSL Sub Branch and a Director of the Camden RSL Club Ltd. Con has a strong community spirit and would like to see Camden and the surrounding areas progress to be regarded as one of the best regions in NSW.

Edward Feuerstein

Edward joined the CCC Management Committee in August 2013. Edward is a local resident who is passionate and dedicated in serving the local community. He is a company director of a counselling, mentoring and training organisation located in south west Sydney. Edward has worked in the mental health, community & youth sector for over 15 years.

William McCormack

William is a local resident and owner of several local businesses. He is a passionate supporter of our local community and brings valuable business expertise, as well as good local knowledge to his role on the CCC Management Committee. William is also a member of the Australian Institute of Company Directors. He has served on the CCC Management Committee for almost five years.

The following members of the committee resigned during the year and we thank them for their valuable contribution to CCC.

Eileen Huxtable

Meran Kidd

Ray Monahan

Sarah Portors

Chairperson & Manager Report



“....it is important to keep our eye firmly on the future and to position CCC to embrace future sector changes and reform and to respond to new opportunities.”

It is time once again to reflect on the achievements of the past twelve months and also to look forward to another year of further strengthening our organisation to ensure that we are equipped to meet the needs of an expanding and increasingly diverse community. While we should take time to recognise and celebrate what we have achieved it is important to keep our eye firmly on the future and to position CCC to embrace future sector changes and reform and to respond to new opportunities. During the past year CCC has continued to expand its services and our outstanding achievements are essentially due to the professional and dedicated work of our staff and volunteers, supported by grant funding, donations, fundraising activities and collaborative partnerships.

Without doubt our staff are our greatest resource. We have a small but dedicated team of professionals that work tirelessly to provide services and programs to meet the needs of our community. We would like to thank our staff for their commitment and hard work during the past year and acknowledge that it is their professional skills and experience together with their passion and innovative spirit that enables us to consistently deliver quality programs and activities. During the year a few of our staff have taken up new opportunities within our team. In February, Mark Jackson, our community worker, commenced working full time when he took on the additional role of community facilitator for the community development program at Edmondson Park. Catherine Gonzaga continues in her role as family worker but has also taken on additional responsibilities as she now works with Mark to deliver our Community Builders program. Maria Esma, our longest serving member of staff, has been appointed to the position of team leader, recognising the experience and expertise she brings to our organisation. Aaron Frydmann is a welcome addition to our team. Aaron, originally a volunteer, now works in the role of program support worker one day each week. He also continues to volunteer, and is the driver for our Seniors Bus Tour program.

We would also like to acknowledge and thank the volunteers that have supported our programs during the year. As our team of staff is small the support provided by our volunteers is invaluable and enables us to extend our reach across the community. The commitment and hard work of our Management Committee deserves special mention. The members of the committee, a number of whom have been involved with CCC for many years, give freely of their time and expertise and the ongoing support they provide is highly valued by both the manager and staff.

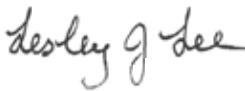
We also recognise and appreciate the funding and support we have received during the past year. Our major grant funding is provided by the NSW government but funding received from Camden Council has been instrumental in supporting the development of new and innovative programs during the year, including our Ballroom dancing program for seniors and our Healthy Cooking program for families. Attracting and retaining adequate funding for services and programs is always a challenge particularly as we are operating in one of the fastest growing areas in NSW where demand for support services is increasing daily. In this environment, we recognise that, in addition to direct funding, the support of our various partners and stakeholders is also a key factor in ensuring that we are able to continue to provide quality services and programs that support the development of strong and inclusive communities. We thank all of our partners and stakeholders for their ongoing support.

Chairperson & Manager Report

This year has been a special year for CCC as we have been actively involved in the commemoration of the Anzac Centenary. With funding from the NSW Government Office for Veterans Affairs and Camden Council, we produced the DVD "Camden Anzacs – Our Story". This DVD was produced to commemorate the 100 year anniversary of the commencement of WWI and to honour the enormous sacrifices Anzac diggers have made throughout Australia's military history. It features the stories of six Australian veterans residing in the Camden local government area as told to a younger generation of Camden residents. The DVD was launched on the 4th August 2014 and was then screened at various events in the lead up to the Anzac Centenary in April. The DVD is a wonderful testimony to the outcomes that can be achieved when different generations within a community work together towards a common goal. With funding from the federal government we also held a community Anzac picnic on the 26th April. This was well supported by our community despite the wet weather that made April 2015 the wettest for over twenty years. Being involved in the commemoration of the Anzac Centenary was an amazing experience for the CCC team, as we witnessed different generations coming together and developed friendships that would otherwise not have been.

Our services further expanded this year as, funded by Urban Growth NSW, we commenced delivery of the community development program at Edmondson Park. This new challenge was taken on enthusiastically by the CCC team and in particular Mark Jackson who was appointed as the community facilitator. The highlights of all our program service delivery are detailed in the individual program reports and we hope that you enjoy reading about the achievements of our staff in providing services across our community during the past year.

We are looking forward to the year ahead and to embracing the opportunities that will present with future changes and reforms within the community sector. At CCC we have a professional team supported by strong corporate governance. We have an innovative and progressive culture that ensures that we are well positioned to respond to, and support, new approaches to the development and implementation of quality community services.



Chairperson



Manager



Children's Services

FUNDING

The Children's Services Program (CSP) is funded by the NSW Department of Education and Communities. Other financial support was received from Camden Council and John Holland Pty Ltd.

SUMMARY

During the past year, the Children Services Program has continued to provide great educational programs for children and families. We have offered a wide range of programs that include playgroups; parenting programs; a family healthy cooking program; breakfast outreach at Leppington Public School; and an expanded Kids Club school holiday program. We also participated in the Camden Play Day in May and the Camden Kids Fun Day in September where many children enjoyed the activities provided and families were able to learn more about CCC services and programs.

HIGHLIGHTS

All three playgroups were well attended and our supported playgroups, operated in partnership with Northcott Disability Services and the Benevolent Society, provided opportunities for parents and children requiring additional support to increase their skills and confidence and develop valuable social networks in a supportive and friendly environment. Supported by Families NSW, and in response to information on the physical and language skills of Camden children highlighted in the Australian Early Development Census (AEDC), a range of therapists were engaged to attend our supported playgroups.

Two Triple P Parenting Programs were successfully delivered to families this year in partnership with Disability Macarthur. The feedback has been encouraging with parents acknowledging that the positive strategies they learned have given them the skills and confidence to better manage family challenges.

Funded by Camden Council, the Healthy Cooking Program was a success and enjoyed by all participants. Facilitated at the Macarthur Centre for Sustainable Living, the program was developed for parents and carers to provide them with the knowledge and skills to provide healthy, affordable meals for their families and to promote overall healthy lifestyles in families.

Our breakfast outreach program at Leppington Public School, provided for pupils on Tuesdays during

school terms, was again well received. With the generous support of John Holland Pty Ltd, Kelloggs, A2 Milk and Bakers Delight Narellan, we were able to provide breakfast for an average of 70 pupils every week.

Our school holiday program has been expanded to include two activities each week of the school holidays as well as a community BBQ. The program runs during the April, July and September school holidays and over the past year the holiday program has provided a wide variety of fun activities for children from the ages of 5-12 years.

Breakfast Outreach Program – Leppington Public School		July 2014 - June 2015
Bright Eyes Supported Playgroup		July 2014 - June 2015
Bright Stars Playgroup		July 2014 - June 2015
Camden Kids Fun Day		17 th September 2014
Camden Play Day		24th May 2015
Healthy Cooking for Families		March 5 - April 2 2015 July 16 - August 13 2015
Kids Club School Holiday Program	Kids Martial Arts Workshop	2 nd July 2014
	Cooking Workshop	9th July 2014
	Little Athletics	24 th September 2014
	Clay Workshop	1 st October 2014
	Insectus Workshop,	2 nd October 2014
	Rainbow Arts and Craft Workshop	8 th April 2015
	Scarecrow Workshop,	9 th April 2015
	Circus Workshop	15 th April 2015
	Quarterly Community Barbecues	1 st July 2014, 23 rd September 2014, 14 th April 2015
Playlinks Supported Playgroup		July 2014 – June 2015
Transition to School Program at Leppington Public School		November 2014 - December 2014
Triple P (Positive Parenting Program)		June - July 2015

"I have become an active participant within the community due to the extended services that have been offered at CCC. My kids and I feel so very lucky to live in such a fun and supportive community. "
Mandy, Playgroup Parent

Strengthening and Empowering our Community

Youth Services

FUNDING

Our Youth Service Early Intervention and Placement Prevention (EIPP) program is funded by the NSW Department of Family and Community Services (FACS). During 2014-2015 other support for our youth services was received from Camden Council, Narellan Rotary and the NSW Office of Communities Veterans' Affairs.

SUMMARY

The CCC Youth Service team are committed to providing quality and innovative programs to meet the needs of young people in our community. During the past year we have developed new partnerships and continued to engage and work with local schools, police, Camden Council and other community organisations to support young people. This support has been provided through individual case management as well as the development and delivery of a variety of innovative programs designed to engage, develop skills, and inform young people.

With limited resources, meeting the needs of the increasing number of young people in the community is probably our biggest challenge. The new housing developments across the Camden LGA have resulted in an influx of families and young people and over the past few years we have experienced a significant increase in demand for our services for young people generally but also for crisis support services.

Looking ahead, our dedicated team of staff remain committed to continue to provide quality services to support young people in our community. We also look forward to being involved in the consultation process with FACS as they undertake the review and reform of targeted earlier intervention services to ensure that the reach and impact of these services is maximised.

HIGHLIGHTS

From the beginning of 2015, the CCC girls program has been running in four local high schools – Camden, Elderslie, Elizabeth Macarthur and Mt Annan. The program has been reviewed and now runs for 16 weeks across two terms with 12 to 15 disengaged female students participating in each school. The program provides support, information, and opportunities for community engagement, and encourages participants to discover their full potential and to develop a sense of self belief and empowerment.

CCC received funding through Camden Council Community Grants to develop and facilitate a “Sessions 4 Teens” program. An early intervention strategy, this program consists of a series of interactive information sessions based upon three key areas of concerns identified by young people. These include drugs and alcohol; healthy relationships; and health and wellbeing. The sessions will run through to the end of 2015.

Also with the support of Camden Council, CCC facilitated a Youth Week Event in April 2015. Focusing on alcohol awareness, we held a Mocktail Party for young people. The event was well attended and as well as learning how to make great alcohol free mocktails, the young people also benefitted from ‘party safe’ tips provided by our guest speaker, Mark Scambary local NSW Police Youth Liaison Officer.

The production of the DVD “Camden Anzacs – Our Story” which was launched in August 2014 was a rewarding experience for the CCC team, young people and veterans alike and demonstrates what can be achieved when different generations work together.

Breakfast Program – Camden High	Ongoing
Camden Anzacs DVD Launch	4 th August 2014
Case Management	Ongoing
Girls Program – local high schools	Ongoing
International Girls' Day	21 st November
Job Prep Program	July 2014 – February 2015
Sessions 4 Teens	February 2015 - Ongoing
Thursday Night Outreach Program Summer & Winter Programs	July 2014 - June 2015
Youth Week – Mocktail Party	15 th April 2015



Youth Week Mocktail Party April 2015

Community Development Services

FUNDING

The major source of funding for our Community Development Services comes from the NSW Department of Family and Community Services (FACS) for the Community Builders Program. During 2014-2015 our community programs were also supported by the Australian Government Anzac Centenary Local Grants Program; NSW Government Community Building Partnership Program; Camden Council; Carers NSW; and CCC fundraising activities.

SUMMARY

This year has been a strong and productive year for our Community Builders program. We continued to deliver established programs such as our cultural bus tours; information sessions for seniors; and cooking workshops and we also added a new ballroom dancing program for seniors that has proved to be extremely popular. As well as providing ongoing information and support services to the community we have focused on linking in with the calendar of key community events. In October we had a breakfast to help raise awareness of mental health and hosted an event for carers during National Carers Week; in March we held a High Tea during Seniors Week; in April we commemorated the Anzac Centenary with a community picnic; and in May we recognised Mothers' Day with a community luncheon. Our community BBQs and quarterly networking events have also supported community engagement and in total during the past year we successfully engaged and provided services for over twenty thousand people residing in the Camden LGA.

HIGHLIGHTS

A major highlight this year, and one that will have an ongoing positive impact on our service delivery, was the purchase, in January, of a pool motor vehicle with funding provided through the NSW Community Building Partnership Program. This has enhanced our ability to support our clients.

Over 500 people attended a special Anzac Day Centenary community picnic on the 26th April 2015. The event was held at Curry Reserve in Camden and with entertainment and activities for all ages, it was a special occasion to mark this important date in our history.

In April 2015 we were very excited to launch our 'Find Your Feet' Seniors Ballroom Dancing program. The program is facilitated by a qualified dance instructor and was developed with the aim of improving the mobility and overall health and wellbeing of seniors while providing an opportunity for social engagement.

The Seniors Cultural Bus Tour program was once again successful in providing opportunities for social engagement for seniors. Activities included a lunch on the Hawksbury Paddle Wheeler; a visit to the Bowral Tulip Festival; shopping and lunch in Berry; visits to the Trainworks Museum and the Sydney Powerhouse Museum; and a special Chocolate and Nut tour. We also ran three shopping trips and our local Christmas Lights tours were once again popular, providing an opportunity for those without transport to enjoy the beautiful lighting displays.

GROUPS

Camden Just Walk It Walking Group

The Camden Just Walk It Group started in 2000. The Group walks every Tuesday along Camden cycleway.

Mount Annan Wanderers, Walking for Pleasure

The Mount Annan Wanderers Group started in 2003. The Group walks every Friday at Mount Annan Botanic Gardens

Macarthur Spinners and Weavers

Macarthur Spinners and Weavers Group started in 2002. The group meets on a Friday at the Camden CWA Building.

Polymyalgia Rheumatica Support Group (PMR)

The PMR Group meets monthly from February-November in the CCC meeting room.



Community Development Services

Events		Date
ANZAC Centenary Community Picnic		26 th April 2015
ANZAC DVD Launch		4 th August 2014
Bunnings Community BBQ		29 th November 2014
CCC Quarterly Community BBQ		1 st July 2014, 2 nd December 2014, 23 rd September 2014, 14 th April 2015
CCC Quarterly Networking Event	Camden Anzacs- "Our Story"	27 th August 2014
	CCC AGM and Art Exhibition	26 th November 2014
	Tracing Your Family History	25 th February 2015
	Breaking down depression and building resilience.	27 th May 2015
Carers Week: Take A Break Meditate		15 th October 2014
McDonald's Fundraising Nights		4 th May, 15 th September 2015
Mental Health Awareness Breakfast		22 nd October 2014
Mother's Day Luncheon		30 th April 2015
Narellan Rhythm's Festival		18 th October 2014
Seniors Week High Tea		24 th March 2015
Programs		Date
Active Over Fifties	Tai Chi Harrington Park	July 2014 - June 2015
	Tai Chi Narellan	July 2014 - June 2015
	Phoenix Health Club	July 2014 - June 2015
Bus Tours for Seniors	Cultural Bus Tours	18 th July , 22 nd August , 19 th September 2014, 17 th October 2014, 20 th February, 17 th April, 29 th May 2015
	Leppington Forest Lawn	July 2014 - June 2015 Quarterly
	Shopping Trips	11 th July 2014, 14 th November 2014, 19 th June 2015
Christmas Giving Tree Program		5 th November 2014 – 16 th December 2014
Cooking Corner		23 rd October, 20 th November 2014 2 nd April, 18 th June 2014
Connecting Women Sketching Program		8 th October - 26 th November 2014
Find Your Feet: Ballroom Dancing		April 28 – 16 th June 2015
NRMA Road Safety Program		July 2014 – November 2014
Sessions for Seniors		15 th July 2014, 12 th August 2014, 22 nd September, 9 th December 2014, 21 st April, 23 rd June 2015
Services		Date
Case Management		As requested
Centre Facilities (Phone, Fax, Photocopier)		Ongoing
Information and Referral		Ongoing
Macarthur Legal		July 2014 – June 2015 Monthly
Sydney Water Payment Assistance Scheme		July 2014 – June 2015
Tax Help		July 2014- October 2014



ANZAC Centenary



Lest we forget

1915 - 2015



2015 ANZAC Day Poetry Competition High School Winner

Red Poppies

I chose to go to war,
To serve my country well,
My life, my life has changed for good,
Nothing will be the same,
Red poppies, red poppies, all about my feet

The rocking of the boat,
The warmth of my home country behind.
Goodbye Australia, goodbye my friends,
I shall see you all again in time.
Red poppies, red poppies, all about my feet

The men all around me,
Excited to be off,
Heroism, one's fatal dream,
Though, that's not the life for me,
Red poppies, red poppies, all about my feet

As we arrive at shore,
The fear of the unknown,
Mounting in our hearts,
Together we must go
Red poppies, red poppies, all about my feet

As we trudge our way,
Through the scrub and fields ,
Down the great gullies,
A rock cut open my heel,
Red poppies, red poppies, all about my feet

Scraping, scraping,
Our hands blistered and sore,
But we must keep on going,
For when night falls we must shelter till dawn,
Red poppies, red poppies, all about my feet

As we drop into our beds,
Not aware of the hardship to come,
Grateful for the much deserved rest,
But I cannot sleep,
Red poppies, red poppies, all about my feet

I run into the battle field,
In a slight daze,
Confusion distorting my movements,
To live is all I need,
Red poppies, red poppies, all about my feet

As I fall to the ground,
My chest clutched in my hand,
Red blood cascading to the ground,
My breathing heavy,
Red poppies, red poppies, all about my feet

"My Maria, my Maria, I die promised to you."
As I slowly died, a bullet in my chest,
All I had to say,
"My Maria, my Maria, I die promised to you."
Red poppies, red poppies, all about my feet

I died slowly on the grass,
My thoughts calm and peaceful,
I had not wanted to be a hero,
Just to serve my people,
Red poppies, red poppies, all about my feet

Hermione Kiley

Year 7 Wollondilly Anglican College

Strengthening and Empowering our Community

East Village Spring Farm

FUNDING

The Community Development Program for East Village Spring Farm is funded by Urban Growth NSW. The initial two year contract has been extended a further 12 months and is now due to end on 30th June 2016.

SUMMARY

We have seen great results during the second year of the East Village Community Development Program. We have continued to provide a wide range of activities and events for residents, bringing them together in a supportive and fun environment; connecting them with each other and the wider community; and laying down the foundations for a strong, inclusive and sustainable community. We have seen many new residents settle into the area and as well as participating in East Village events, they have also linked in to many CCC programs including playgroups, school holiday activities, community BBQs, and seniors bus tours.

There are over 300 houses occupied in East Village and the majority are families with young children.

Construction of the new Spring Farm Primary School is underway and it is expected to open at the beginning of 2016 providing an important new focus point for the community. As the development continues to expand, CCC remains committed to ensuring the sustainability of a strong, connected community with active resident participation in community life beyond our delivery of the community development program.

Mad Hatter High Tea (Meet & Greet)	30 th August 2014
Camden Kids Fun Day	10 th September 2014
School holiday kids club – Insektus workshop	2 nd October 2014
Take a Break Mediate Carers Week In partnership with CCC	16 th October 2014
Halloween Trick or Treat night	31 st October 2014
Christmas Giving Tree Launch in partnership with CCC	5 th November 2014
East Village Christmas Party	5 th December 2014
Family Fun Day(Meet & Greet)	8 th January 2015
Scarecrow Workshop, East Village	9 th April 2015
East Village Mother's Day Luncheon	30 th April 2015
Frozen Night Playmaze (Meet & Greet)	12 th June 2015

Bardia, Edmondson Park

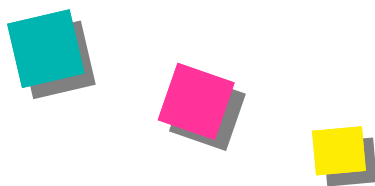
FUNDING

The community development program for Bardia, Edmondson Park is funded by Urban Growth NSW. The initial contract is for two years and we commenced delivery of the program in February 2015.

SUMMARY

The Bardia community facilitator is responsible for undertaking welcome visits to all new residents as well as developing social infrastructure and delivering community activities and events aimed at building a strong, inclusive and empowered community. A key focus is also to integrate Bardia residents with the surrounding communities across the Liverpool, Campbelltown and adjoining Camden LGAs.

There are currently over 160 houses occupied and as the development expands we are committed to providing a high level of support to the residents. We are looking forward to a great year ahead, meeting and engaging with new families and providing innovative programs for Bardia residents.



An Evening in Edmondson Park	6 th March 2015
Youth in the Park	18 th March 2015
Neighbour Day	29 th March 2015
Kids Fun Day	7 th April 2015
Mother's Day Picnic	9 th May 2015
Bardia Meet and Greet	19 th June 2015

EastVillage

Edmondson Park

Acknowledgements

The CCC Management Committee would like to thank all CCC staff and volunteers for their support during the past year.

Staff



Sue Robinson
Manager



Maria Esma
Team Leader



Aaron Frydmann
Program Assistant



Catherine Gonzaga
Family Worker



Elleneta Hocking
Bookkeeper



Mark Jackson
Community Worker



Teeam Page
Youth Worker

Volunteers

Aaron Frydmann
Alvina Kai Lin Ng
Barbara Allan
Ben Bowman
Brandon Lee
Breanna Cassar-Beu
Bree Houghton
Bronte Teale
Caitlin Stoddart

Cathy Cascarino
Danica Davis
Doreen Mongan
Heulwen Dixon
Jane Austin
Kay Gammon
Lana Mayes
Lisa Austin
Meran Kidd

Natalie Nastesk
Pam Shortland
Ray Herbert
Ray Monahan
Robert Robinson
Shi Han Wong
Tegan Morley
Temia Cartilla-Hao
Tony Cascarino

CCC gratefully acknowledges the following people, partnership organisations, and government agencies for their financial or in kind support during 2014 - 2015

Abbey McCulloch
A2 Milk
ADHC
Australian Taxation Office
Bakers Delight

Bardia Public School
Bringelly Quality Meats
Bunnings Narellan
Camden Aglow
Camden Civic Centre

Campbelltown/Camden District Band
Camden Council
Camden Council Library Services
Camden High School

Acknowledgements

Camden Just Walk It	Care Pair	PMR Group
Camden RSL Sub- Branch	Macarthur Legal Centre	Readysteadygokids, Narellan
Camden Seniors Issues Group	McDonalds Macarthur	RSPCA
Camden Show Society	Morpheus Academy	Runnymede Group
Campbelltown Performing Arts High	Mother Hubbard's Cupboard	Russell Matheson, Federal MP for Macarthur
Camden Spinners and Weavers	Mt Annan High School	Rydges Campbelltown
Campbelltown City Baptist Church	Mt Annan Leisure Centre	Sector Connect
Carers NSW	Mt Annan Wanderers	Simplicity IT
Centrelink	Narellan Community Health Centre	South West Sydney Area Health
Chris Patterson, State MP for Camden	Narellan Physical Culture Club	South West Sydney Family Referral
Jackie Murray MDG Studio	Narellan Rotary Club	Service – Uniting Care Burnside
Jo Wells	Narellan Scouts Group	South Western Sydney Medicare Local
John Holland	Narellan Town Centre Management	TAFE NSW
Kaarle McCulloch	Northcott Disability Services	The Benevolent Society
Kelloggs	NRMA	The Black Dog Institute
Lara Symkowiak, Mayor of Camden	NSW Department of Education & Communities	The District Reporter
LCSA	NSW Department of Family and Community Services	The Pit Personal Defence Studios
Lees Massage & Acupuncture	NSW Office of Communities Veterans' Affairs	Traxside Youth Health Service
Leppington Forest Lawn Cemetery	NSW Police	Unilever
Leppington Public School	NSW Rural Fire Service	United Cinemas
Leumeah High School	Oran Park Town Community Development Program	Urban Growth NSW
Lifeline	Phoenix Health Club	WSU School of Medicine
Lolliland	Pizza Hut Narellan	W.I.L.M.A. Women's Health Centre
Macarthur Advertiser		WWI Re-enactment Group 18th Battalion
Macarthur Centre for Sustainable living		Youth Solutions Macarthur
Macarthur Chronicle		
Macarthur Community Access		

ANZAC DVD

CCC would also like to acknowledge and thank everyone involved over the past two years in the production, launch, and promotion of the DVD "Camden Anzacs – Our Story".

Financials

Treasurers Report

Camden Community Connections has reported a net surplus of \$50,359 for the year ending 30 June 2015

Total Revenue: \$576, 034

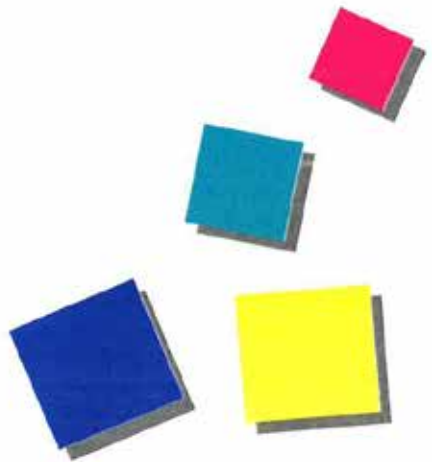
Total Expenses: \$525, 675

The closing balance as at 30 June was 302,386 with retained surplus of \$254, 714

Full details are available in the audited Financial Statements included in the annual report



Ken Patterson
Treasurer



STATEMENT OF FINANCIAL POSITION
AS AT 30 JUNE 2015

	Note	2015 \$	2014 \$
CURRENT ASSETS			
Cash and cash equivalents	4	302,386	272,431
Trade and other receivables	5	32,690	7,679
Other current assets	6	3,738	3,749
Total current assets		338,814	283,859
NON-CURRENT ASSETS			
Property, plant and equipment	7	8,902	-
Total non-current assets		8,902	-
Total assets		347,716	283,859
CURRENT LIABILITIES			
Trade and other payables	8	36,838	31,483
Other liabilities	9	20,616	22,284
Provisions	10	35,548	25,737
Total current liabilities		93,002	79,504
Total liabilities		93,002	79,504
Net assets		254,714	204,355
Represented by			
EQUITY			
Retained surplus	11	254,714	204,355
Total equity		254,714	204,355

The accompanying notes form part of these financial statements.



Camden
Community
Connections

**STATEMENT OF CHANGES IN EQUITY
FOR THE YEAR ENDED 30 JUNE 2015**

	Retained Earnings \$	Total Equity \$
Balance as at 1 July 2013	159,857	159,857
Surplus attributable to members	44,498	44,498
Balance as at 30 June 2014	204,355	204,355
Surplus attributable to members	50,359	50,359
Balance as at 30 June 2015	254,714	254,714

The accompanying notes form part of these financial statements.



Camden
Community
Connections

**STATEMENT OF CHANGES IN EQUITY
FOR THE YEAR ENDED 30 JUNE 2015**

	Retained Earnings \$	Total Equity \$
Balance as at 1 July 2013	159,857	159,857
Surplus attributable to members	44,498	44,498
Balance as at 30 June 2014	204,355	204,355
Surplus attributable to members	50,359	50,359
Balance as at 30 June 2015	254,714	254,714

The accompanying notes form part of these financial statements.



Camden
Community
Connections

**STATEMENT OF CASH FLOWS
FOR THE YEAR ENDED 30 JUNE 2015**

	Note	2015 \$	2014 \$
CASH FLOW FROM OPERATING ACTIVITIES			
Receipts from members and governments		566,218	498,834
Payments to suppliers		(536,380)	(475,256)
Interest received		9,816	12,666
Net cash provided by (used in) operating activities	12b	39,654	36,244
CASH FLOW FROM INVESTING ACTIVITIES			
Payment for property, plant & equipment		(9,699)	-
Net cash provided by (used in) investing activities		(9,699)	-
Net increase (decrease) in cash held		29,955	36,244
Cash at the beginning of the year		272,431	236,187
Cash at the end of the year	12a	302,386	272,431

The accompanying notes form part of these financial statements.

**NOTES TO THE FINANCIAL STATEMENTS
FOR THE YEAR ENDED 30 JUNE 2015****NOTE 1 STATEMENT OF SIGNIFICANT ACCOUNTING POLICIES**

Camden Community Connections Incorporated has elected to early adopt the Australian Accounting Standards - Reduced Disclosure Requirements as set out in AASB 1053: *Application of Tiers of Australian Accounting Standards* and AASB 2010-2: *Amendments to Australian Accounting Standards arising from Reduced Disclosure Requirements*.

The financial statements are general purpose financial statements that have been prepared in accordance with Australian Accounting Standards - Reduced Disclosure Requirements of the Australian Accounting Standards Board (AASB) and the *Associations Incorporations Act 2009 (NSW)*. The association is a not-for-profit entity for financial reporting purposes under Australian Accounting Standards.

Australian Accounting Standards set out accounting policies that the AASB has concluded would result in financial statements containing relevant and reliable information about transactions, events and conditions. Material accounting policies adopted in the preparation of these financial statements are presented below and have been consistently applied unless otherwise stated.

The financial statements, except for the cash flow information, have been prepared on an accruals basis and are based on historical costs, modified, where applicable, by the measurement at fair value of selected non-current assets, financial assets and financial liabilities.

(a) Income Tax

The Association is exempt from income tax as it is run as a not-for-profit association.

(b) Property, Plant & Equipment

Each class of property, plant & equipment is carried at cost or fair value as indicated less, where applicable, any accumulated depreciation and impairment losses.

The carrying amount is reviewed annually by the committee to ensure it is not in excess of the recoverable amount from those assets. The recoverable amount is assessed on the basis of the expected net cash flows which will be received from the assets employment and subsequent disposal. The expected cash flows have not been discounted to present values in determining recoverable amounts.

The depreciable amount of all fixed assets are depreciated or amortised over their estimated useful lives from the time the asset is held ready for use.

(c) Cash

Cash and cash equivalents include cash on hand and at call deposits with banks or financial institutions.

(d) Revenue

Revenue from the sale of goods and rendering of services is recognised upon the delivery of the goods or service to customers and members.



Camden
Community
Connections

NOTES TO THE FINANCIAL STATEMENTS FOR THE YEAR ENDED 30 JUNE 2015

NOTE 1 STATEMENT OF SIGNIFICANT ACCOUNTING POLICIES

(d) Revenue (continued)

Grant revenue is received based on the grant conditions being met. All revenue is recognised net of GST.

(e) Goods & Services Tax (GST)

Revenues, expenses and assets are recognised net of the amount of GST, except where the amount of GST incurred is not recoverable from the Australian Taxation Office. In these circumstances the GST is recognised as part of the cost of acquisition of the asset or as part of an item of the expense. Receivables and payables in the statement of financial position are shown inclusive of GST.

(f) Employee Benefits

Provision is made for Camden Community Connections Incorporated's liability for employee benefits arising from services rendered by employees to the end of the reporting period. Employee benefits that are expected to be settled within one year have been measured at the amounts expected to be paid when the liability is settled.

Employee benefits payable later than one year have been measured at the present value of the estimated future cash outflows to be made for those benefits. In determining liability, consideration is given to employee wage increases and the probability that the employee may not satisfy vesting requirements. Those cashflows are discounted using market yields on national government bonds with terms to maturity that match the expected timing of cashflows.



Camden
Community
Connections

**NOTES TO THE FINANCIAL STATEMENTS
FOR THE YEAR ENDED 30 JUNE 2015**

	2015	2014
	\$	\$
NOTE 2 REVENUE		
Operating activities		
Advertising and other income	20,490	6,968
CCC Support	-	7,000
Fundraising	3,929	6,740
Grants	436,659	381,010
Resources	315	673
Management fees received	84,271	77,438
Membership fees	676	627
Program income	7,566	1,464
	<u>553,906</u>	<u>481,920</u>
Non-operating activities		
Donations	12,312	7,209
Interest	9,816	12,666
Transitional Funding	-	9,705
	<u>22,128</u>	<u>29,580</u>
Total revenue	<u>576,034</u>	<u>511,500</u>

NOTE 3 SURPLUS FROM ORDINARY ACTIVITIES

**Surplus from ordinary activities before income tax
expense has been determined after:**

(a) Expenses

Depreciation of non-current assets		
- computers & other equipment	<u>797</u>	<u>-</u>
Other Expenses		
Auditors remuneration	5,400	5,000
Bus expenses	4,320	3,281
Internet, phone & fax	6,343	4,706
Insurance	6,019	5,350
Management fee	84,242	77,437
Other program costs	43,257	32,532
Promotion	2,648	1,925
Rent	12,768	13,055
Other	33,887	42,761
	<u>199,681</u>	<u>186,047</u>



**NOTES TO THE FINANCIAL STATEMENTS
FOR THE YEAR ENDED 30 JUNE 2015**

	2015	2014
	\$	\$
NOTE 4 CASH AND CASH EQUIVALENTS		
Current		
Cheque account - Westpac	9,204	1,868
Cash reserve account - Westpac	122,677	104,793
IMB general account	61	61
IMB Term Deposit	50,827	50,000
IMB Term Deposit	67,757	65,529
IMB Term Deposit	51,630	50,000
Cash on hand	230	180
	302,386	272,431
NOTE 5 TRADE AND OTHER RECEIVABLES		
Trade debtors	29,681	6,682
Accrued revenue	2,776	832
Other debtors	233	165
	32,690	7,679
NOTE 6 OTHER CURRENT ASSETS		
Prepayments	3,738	3,749
NOTE 7 PROPERTY, PLANT & EQUIPMENT		
Motor Vehicles	51,993	42,294
Less accumulated depreciation	(43,091)	(42,294)
	8,902	-
Furniture & fixtures - at cost	5,879	5,879
Less accumulated depreciation	(5,879)	(5,879)
	-	-
Computers & computer equipment - at cost	13,731	13,731
Less accumulated depreciation	(13,731)	(13,731)
	-	-
	8,902	-



**NOTES TO THE FINANCIAL STATEMENTS
FOR THE YEAR ENDED 30 JUNE 2015**

NOTE 7 PROPERTY, PLANT & EQUIPMENT (Continued)

	2015	2014
(a) Summary of movements in carrying amounts	\$	\$
Balance at beginning of year	-	-
Additions	9,699	-
Disposals	-	-
Depreciation expense	(797)	-
Amounts written off	-	-
Carrying amount at the end of the year	8,902	-

NOTE 8 TRADE AND OTHER PAYABLES

Current

Trade creditors	1,430	1,624
BAS Liability & GST payable	18,592	18,591
PAYG Withholding	-	-
Credit cards	1,204	1,254
Accrued expenses	8,135	5,014
Superannuation payable	2,327	-
Accrued audit fee	5,150	5,000
	36,838	31,483

NOTE 9 OTHER LIABILITIES

Current

Prepaid funding	14,364	12,671
CAYS - funding accrued	6,252	9,613
	20,616	22,284

NOTE 10 PROVISIONS

Current

Provision for annual leave	17,871	14,215
Provision for long service leave	17,677	11,522
	35,548	25,737

NOTE 11 RETAINED SURPLUS

Movements during year

Retained surplus at the beginning of the year	204,355	159,857
Surplus from ordinary activities	50,359	44,498
Retained surplus at the end of the year	254,714	204,355



Camden
Community
Connections

**NOTES TO THE FINANCIAL STATEMENTS
FOR THE YEAR ENDED 30 JUNE 2015**

	2015	2014
	\$	\$
NOTE 12 CASH FLOW INFORMATION		
(a) Reconciliation of cash		
Cash at the end of the financial year as shown in the statement of cash flows is reconciled to the related items in the statement of financial position as follows:		
Cash at bank	302,386	272,431
(b) Reconciliation of cash flow from operations with surplus from ordinary activities after income tax		
Surplus from ordinary activities after income tax	50,359	44,498
Non-cash flows in surplus from ordinary activities		
Depreciation expense	797	-
Changes in assets & liabilities		
(Increase)/decrease in receivables	(25,011)	(7,389)
(Increase)/decrease in other current assets	11	(764)
(Decrease)/increase in other liabilities	(1,668)	(14,265)
(Decrease)/increase in payables	5,355	3,771
(Decrease)/increase in provisions	9,811	10,393
Cash flows from (used in) operations	39,654	36,244

NOTE 13 ECONOMIC DEPENDANCY

Camden Community Connections Incorporated is dependant on government funding for the majority of its revenue used to operate the business. At the date of this report the committee has no reason to believe that the various government departments will not continue to support the association.

NOTE 14 ASSOCIATION DETAILS

The registered office and principal place of business of the association is:

Camden Community Connections Incorporated
16 - 24 Queen Street
Narellan NSW 2567

INDEPENDENT AUDIT REPORT TO THE MEMBERS OF CAMDEN COMMUNITY CONNECTIONS INCORPORATED

Report on the Financial Report

We have audited the accompanying financial report being a special purpose financial report, of Camden Community Connections Incorporated, which comprises the statement of financial position as at 30 June 2015, the statement of comprehensive income, statement of changes in equity and statement of cash flows for the year then ended, notes comprising a summary of significant accounting policies and other explanatory information, and the officers' assertion statement.

Committee's Responsibility for the Financial Report

The committee of Camden Community Connections Incorporated are responsible for the preparation of the financial report and have determined that the basis of preparation described in Note 1, is appropriate to meet the requirements of the Associations Incorporation Act (NSW) 2009 and Associations Incorporation Regulation (NSW) 2010 and is appropriate to meet the needs of the members. The officers' responsibility also includes such internal control as the officers determine is necessary to enable the preparation and fair presentation of a financial report that is free from material misstatement, whether due to fraud or error.

Auditor's Responsibility

Our responsibility is to express an opinion on the financial report based on our audit. We conducted our audit in accordance with Australian Auditing Standards. Those standards require that we comply with relevant ethical requirements relating to audit engagements and plan and perform the audit to obtain reasonable assurance about whether the financial report is free from material misstatement.

An audit involves performing procedures to obtain audit evidence about the amounts and disclosures in the financial report. The procedures selected depend on the auditor's judgement, including the assessment of the risks of material misstatement of the financial report, whether due to fraud or error. In making those risk assessments, the auditor considers internal control relevant to the entity's preparation and fair presentation of the financial report in order to design audit procedures that are appropriate in the circumstances, but not for the purpose of expressing an opinion on the effectiveness of the entity's internal control. An audit also includes evaluating the appropriateness of accounting policies used and the reasonableness of accounting estimates made by management, as well as evaluating the overall presentation of the financial report.

We believe that the audit evidence we have obtained is sufficient and appropriate to provide a basis for our audit opinion.

Audit Opinion

In our opinion the financial report of Camden Community Connections Incorporated is in accordance with the *Associations Incorporations Act 2009 (NSW)*, including:

- a) giving a true and fair view of the association's financial position as at 30 June 2015 and of its performance for the year ended on that date; and
- b) complying with Australian Accounting Standards - Reduced Disclosure Requirements.

Kelly Partners (South West Sydney) Pty Ltd



Daniel Kuchta

Registered Auditor Number 335565

Campbelltown

Dated this 31st day of August 2015.



Camden
Community
Connections

**STATEMENT BY MEMBERS OF THE COMMITTEE
FOR THE YEAR ENDED 30 JUNE 2015**

In the opinion of the committee the financial report:

1. Presents fairly the financial position of the Camden Community Connections Incorporated as at 30 June 2015 and its performance for the year ended on that date in accordance with Australian Accounting Standards, mandatory professional reporting requirements and other authoritative pronouncements of the Australian Accounting Standards Board.
2. At the date of this statement, there are reasonable grounds to believe that the Camden Community Connections Incorporated will be able to pay its debts as and when they fall due.

This statement is made in accordance with a resolution of the Committee and is signed for and on behalf of the Committee by:

Lesley Lee
Chairman

Ken Patterson
Treasurer

Dated this *24* day of *August* 2015





www.camdenconnections.org.au

www.facebook.com/camdenconnections