

# About Us



Camden Community Connections (CCC) is a not-for-profit community organisation with no religious or political affiliations that has provided community services for almost 30 years. CCC was originally founded to provide community services and facilities for the new housing developments and associated growing population in and around Camden and Narellan where there were no existing services. Today, CCC provides a wide range of community services across Macarthur. We are committed to building strong, inclusive and cohesive communities where people of all ages and backgrounds are supported to connect to local services, community activities and each other. Our local knowledge and experience; skilled and professional staff; commitment to community consultation; and focus on equity of access to all groups, ensures that we are able to respond effectively to the needs of rapidly expanding and increasingly diverse communities.

## **Our Vision**

Strong and empowered communities, where people of all ages and backgrounds are supported to actively participate in community life, reducing isolation and disadvantage and improving overall quality of life.

## **Our Mission**

To build and support strong, inclusive and cohesive communities in established and emerging localities across the Macarthur region.

## **Our Values**

### **Community Focused**

Understanding the community and their needs through ongoing community consultation; involving the community; focusing on providing programs and services that are needed and that will enhance the lives of residents in the community.

### **Forward Thinking and Innovative**

Embracing change and responding to the changing needs of the community; open to new ideas and innovative programs.

### **Respectful and Inclusive**

Developing services for people of all ages, backgrounds and circumstances; culturally appropriate, valuing diversity and respecting differences; ensuring access and equity in provision of services, information and employment.

### **Professional and Accountable**

Focusing on quality and continuous improvement; accountable to all stakeholders; valuing staff and volunteers; building collaborative partnerships.



# Management Committee

## July 2016 - June 2017

### William McCormack - Chairperson

William has been part of the Camden Community Connections Team since 2010. A Director of three local companies in diverse range of industries from IT, Electrical and Medical, he is also a member of the Australian Institute of Company Directors. William is a passionate supporter of our local community and brings valuable business expertise, as well as good local knowledge to his role on the CCC Management Committee.

### Helen Byfield Fleming - Vice Chairperson

Helen joined the CCC Management Committee in November 2014. After a long career with TAFE NSW, Helen moved on to take up the role of Centre Manager with the Macarthur Centre for Sustainable Living which, with her expertise in education and event organisation, has undergone rapid expansion. Helen is passionate about education and sustainable living.

### Anna Grubisic - Secretary

Anna joined the CCC Management Committee in November 2015. This is her first time as a member of a committee and she is excited to be part of our dynamic team. Anna is a local resident and has a strong passion for community especially programs for young people. She would like to see the Camden area continue to flourish and become a thriving community driven area.

### Lyndell Scott - Treasurer

Lyndell joined the CCC Management Committee in November 2016.

This is her first time as a member of a committee and she is thrilled to be part of great team. Lyndell is a local resident and has a strong passion for programs for older residents of the community. She would like to see the Camden area continue to have the compassion, empathy and drive to work as a great community

### Con Diomis

Con joined the CCC Management Committee in November 2014. He is the National Key Accounts Manager at Forbo Flooring Systems and is the Vice president of the Camden RSL Sub Branch and a Director of the Camden RSL Club Ltd. Con has a strong community spirit and would like to see Camden and the surrounding areas progress to be regarded as one of the best regions in NSW.

### Lesley Lee

Lesley joined the CCC Management Committee in March 2013. Lesley is Program Manager Operations at Disability Macarthur and has many years' experience working in the community sector within the Macarthur region. She has a particular interest in ensuring equity of access to community services for everyone in the community.

### Matthew Waters

Matt joined the CCC Management Committee in July 2015. He owns his own drafting business and has been in this industry for 13 years. He loves to support local sporting groups and also plays sport on the weekends. Matt grew up in the area and is looking forward to seeing the expansion of the community over the coming years.



# Chairperson's Report



It gives me great pleasure to once again have this opportunity to reflect on the past 12 months as Chairperson for Camden Community Connections. This is a great time of the year, when we get to look back on our significant achievements as an organisation.

This year has been a year of change for all of us. We have farewelled our previous Manager Sue Robinson, whom has left to enjoy retirement, and with that, we have welcomed on board our new General Manager Ed Feuerstein. The Management Committee and Staff have been working tirelessly to prepare for our future, and as part of that process, we have been working on a new 'Brand', a new look and feel for the organisation which will prepare us to tackle the next stage of our growth.

The staff and our volunteers have continued to do an outstanding job of consolidating and building on existing services in what is a very challenging and complex environment.

Our membership continues to grow, and with that so does our need for ever changing programs and services. Our focus this year has been on preparing for growth. This has included the implementation of new Client and Business Management Systems, along with the recruitment of a Community Engagement Coordinator (Kim Landouw) who has been tasked with building our relationships with local businesses, organisation and members of the community.

This year has also been one of celebration as we mark and highlight our 30th Anniversary. In July we had a wonderful High Tea with our Members, and we will conclude this with our 30th Anniversary Dinner which will be held at the end of November.

While acknowledging our committee I must also acknowledge the dedication, enthusiasm and skills that our incredible staff and outstanding volunteers bring to Camden Community Connections. Thank you to our General Manager Ed Feuerstein, who has worked tirelessly to deliver quality services and to raise the profile of Camden Community Connections throughout our region.

I would lastly like to thank Lesley Lee who left the committee earlier on this year to move away from the region to enjoy her Retirement. Lesley has been part of our organisation for many years and was a huge asset to our team. I wish Lesley and her husband well.

A handwritten signature in black ink, appearing to read 'William McCormack'.

William McCormack

**Management Committee Chairperson**



# Manager's Report



It is with an immense sense of pride that I take on a role as the General manager of Camden Community Connections to follow on further in its growth and future. My experience in previous years of sitting on the board of Camden Connections, has taught me on the importance of the organisation within the community and its beautiful history. I would also like to recognise and thank Sue Robinson for her previous Management. CCC has been Operating in one of the fastest growing communities in Australia in a sector undergoing significant review and reform. Camden Community Connections has remained focused and united in our aim to continue to provide quality community services that support our vision of a strong and empowered community.

Camden Community Connections has serviced the community for the past thirty years and is celebrating its 30 years in the community at this AGM. We have identified in that time a range of enormous changes and development within new and existing estates.

Our population has become more diverse and increased from under 30 000 in 1987 to just over 88 000 in 2017; community attitudes and expectations on a wide range of issues have changed; and now we are living in the age of the internet and social media where we can have access to information and people at any time of day. Our organisation has proven experience in responding to change and is well positioned to embrace the future, whatever challenges may present.

The key factor underpinning the success of our organisation is a solidarity of purpose that is driven by a desire to provide quality services and to contribute to the development of a strong and empowered community where individuals can actively participate in community life. Standing behind the organisation, is a dedicated team of employees, volunteers and partners that are united in their fundamental belief that what we are doing is important and we can change people's lives.

Our small team of staff are our greatest resource. Individually they all bring different skills and experience and this makes for a versatile and effective team. They are passionate, work hard, and are always exploring new and innovative approaches. During the year, we welcomed Kim Landouw who has been appointed as our Community Engagement Coordinator, to build community and business relationships for our rebranding and future.

Mark Jackson has step down from Acting Team leader and replaced our Community Engagement facilitator Nathanael Edward's at Willowdale. We have had Maria Esma return from Maternity Leave and be part of our Youth and Community Team.

Our Management Committee also work hard in a voluntary capacity to support the organisation. They generously give their time and expertise and both the manager and staff appreciate their invaluable contribution. Volunteers play an integral role working within the community sector and we would like to recognise and thank our small team of volunteers for the wonderful contribution they have made in supporting our programs over the past year.

# Manager's Report

We also recognise the important role played by our various partners and stakeholders and thank them for their ongoing support. In an environment where there are limited resources it is really critical that we create strong partnerships with other organisations both within and external to the sector to ensure that, working together, we are able to provide effective supports for all groups across our community.

Our major grant funding comes from the NSW government and this support is critical to the ongoing sustainability of our organisation. The actual funds provided are vital but so too is the support, advice and encouragement we receive on a regular basis from the staff working within the departments.

Again this year, funding from Camden Council has enabled us to develop new and innovative programs, including Youth outreach programs, Thursday Night Live, and a focus on community engagement. We also received another 12 months funding from Urban Growth NSW to continue delivery of the community development programs at East Village Spring Farm. We have continued to have a great working relationship with Stocklands to provide a community development program at the new residential development at Willowdale. Our funding agreement with NSW Family & Community Services for the provision of EIPP services and Community building has been extended for a further three years, while shifting the deliver to Earlier Intervention and child development in the first 1000 days.

The details of all our program service delivery can be found in the individual program reports and we hope that you enjoy reading about the work undertaken by our staff to support the community during the past year.

The year ahead promises to be both busy and exciting, as we continue to manage the challenges of effectively supporting a community rapidly increasing in size and diversity, but also planning for a new outlook and embracing change and increasing service delivery.

Our future is in the development of building further funding by the growing community and adapt to build our future with our new name and rebranding.

As our heart is in our community, our service delivery will not decrease but increase by its quality and intensity, so that we may help people overcome change and be ready for the next 30 Years.



Edward Feuerstein JP  
**General Manager**



# Children's Services

## FUNDING

The Children's Services Program (CSP) is funded by the NSW Department of Education and Communities. Financial support was also kindly received from Camden Council, and Stockland.

## SUMMARY

Once again, 2017 has been an exciting year for Camden Community Connections (CCC) as we have continued to provide a wide range of services to children and families living in our community. With the Camden LGA being one of the fastest growing areas in Australia there has been a rapid growth of new families bringing increased diversity and strength to our community. This year CCC has been providing relevant programs, services, and information to meet the needs of new and existing families. CCC has been engaged in assisting newly arrived residents with their transition to the area. CCC also provides services that play an important role in creating opportunities for families to build a strong local support network.

This year CCC has run three playgroups. Bright Eyes, which is held every Monday during school term and which is an indoor supported playgroup. Playlinks, which is held on a Wednesday and is an outdoor supported playgroup. Bright Stars, which is a community playgroup held on a Thursday and is run by parents. We also participated in the Council initiative, the Camden Kids Fun Day in September. This event was well attended and the children enjoyed a wide variety of activities on the day.

This year we worked in partnership with local agencies, Northcott Disability Services and Benevolent Society to facilitate supported playgroups. We also worked with local health service providers to provide health and development information to families. These partnerships with other local agencies are long standing and are highly valued especially as our resources are increasingly stretched as we strive to meet the needs of our growing community.

We have another valued and longstanding relationship with Leppington Public School where we hold a weekly breakfast program every Tuesday morning for approximately 70-80 students. We also support their transition to school for kids to go to kindergarten next year. It is a privilege to work with the staff and students at Leppington Public School and we are looking forward to working together with them into the future.

This year our expanded Kids Club School Holiday program consisted of many different workshops, which were all well attended and enjoyed by the participants.

This year our expanded Kids Club School Holiday program consisted of eleven different workshops, which were well attended and enjoyed by the participants. We also successfully facilitated a Positive Parenting Program (Triple P) in partnership with Disability Macarthur.

We look forward to growing our organisation and play groups in 2018. Over the next year we will be working with the ongoing challenge of ensuring the best use of our limited resources to meet the demands of our rapidly growing community. We remain passionate and committed that this will support the continued delivery of quality services and support to families in our community in the coming year and into the future.

## EVENTS / SERVICES / PROGRAMS

Breakfast Outreach Program	Leppington Public School	July 2016 - June 2017
Bright Eyes Supported Playgroup		July 2016- June 2017
Bright Stars Playgroup		July 2016- June 2017
Camden Kids Fun Day		14th September 2016
Camden Play Day		5th June 2017
Family Fit		August - Sept 2016
Kids Club School Holiday Program	Science Workshop	6th July 2016
	Game 2 U	7th July 2016
	Max Skating Workshop	13th July 2016
	Art Workshop	13th July 2016
	Kids cooking	27th September 2016
	Super Heroes	28th September 2016
	Reptile Show	29th September 2016
	Little Baker easter treats	11 <sup>th</sup> April 2017
	Petty Zoo & Easter Hunt	13 <sup>th</sup> April 2017
Playlinks Supported Playgroup		July 2016 – June 2017
Circus workshop		20 <sup>th</sup> April 2016
Quarterly CCC BBQ		18 April 17, 11 July 17, and 3 oct 2017
Transition to School Program	Leppington PS	October - November 2016
Triple P ( Positive Parenting Program)		July 16 , Oct 16, March 17, May 17,



# Youth Services

## FUNDING

The major source of funding for our Youth Service Early Intervention and Placement Prevention (EIPP) program comes from NSW Department of Family and Community Services (FACS). We also received additional funding from FACS this year for a Youth Opportunities program. Other financial support was received from Camden Council and the Camden Lioness Club.

## SUMMARY

The EIPP program offers young people, and/ or their families access to case management, information, support, and referral to other services. The CCC youth team have had a successful year, engaging many young people who are at risk, disadvantaged or disengaged, with our programs and services. CCC programs provide opportunities for young people to become involved in positive experiences whether it is a recreational event, or social inclusion and early intervention support programs. During the year we have established new partnerships and we continue to engage and work with local schools, NSW Police, Camden Council and other community organizations. We value these relationships and they play an important role in supporting our team to deliver quality services to meet the needs of the increasing number of young people in our community.

During this past year programs targeting young people have included:

- A breakfast outreach program at Camden High School, providing breakfast and other support for at risk and disadvantaged students.
- Girls programs running in three local high schools and reaching out to young females that are at risk or disengaged from school. The program supports the participants to discover their full potential through participation in a range of activities; provision of information; and linking in to other support services.
- A pilot program at Leppington Public School targeting male and female year 6 students based on subjects reflecting the Get Up Stand Up program and Girls Group. This programs encourages self discovery, resilience and awareness and information on many subjects that effect young people
- “Get Up, Stand Up” a 16 week boys program targeting disengaged young males. This program aims to build resilience; encourages self-discovery; and fosters respect and leadership within a team environment.
- Individual case management, continues to be in high demands with local high schools in supporting their students with extra assistance

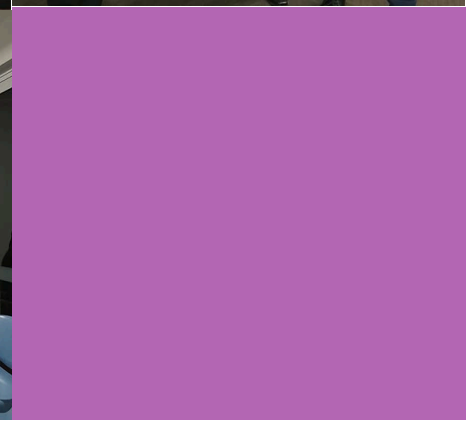
- A Youth Week event involved having guest speaker Matthew Palmer from PHN presenting on mental health, mindfulness and “being here being heard” followed by a chocolate making workshop.
- A second Youth Week event was ran at Birriwa Reserve. Local young person entertained the event by DJ’ing and a rock climbing wall, BBQ and activities was provided.
- A Thursday night outreach program reaching out to local young people who may be disadvantaged and/or seeking a social safe place. The program involves fun activities and refreshments and also provides the opportunity to provide relevant information and case management and referral.

Camden Community Connections Youth team are highly dedicated to catering the Camden LGA. With a rapidly increasing number in young people our limited resources are stretched. However, CCC’s youth team are committed to continue to grow and provide ongoing effective support for young people through the delivery of quality programs and events.

Breakfast Program – Camden High	Ongoing
Case Management	Ongoing
“Get up, Stand up” Boys Program	Ongoing
Girls Group Program - local high schools	Ongoing
Leppington Public Program	Ongoing
Thursday Night Outreach Program	Ongoing
Youth Week	Ongoing
Thursday Night Live	Ongoing

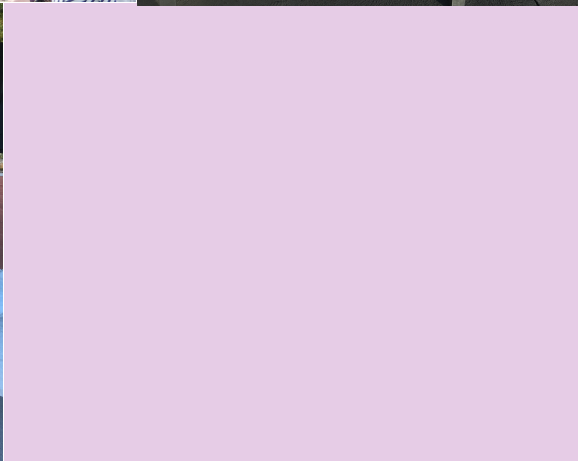
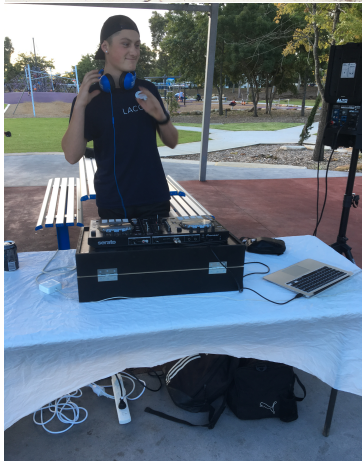
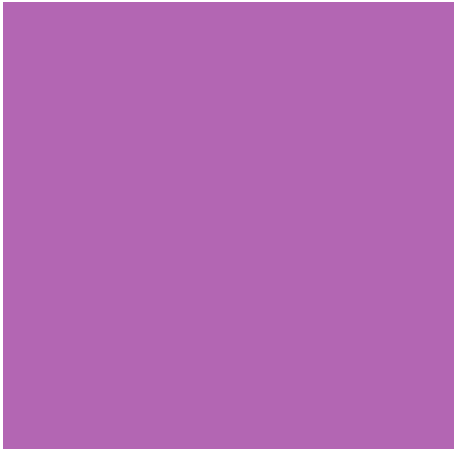
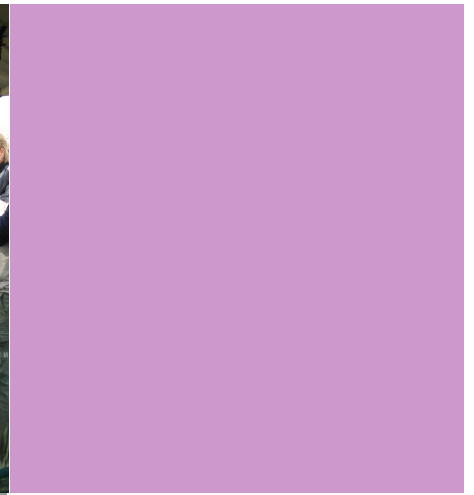


# *Strengthening and Empowering our Community*





# *Strengthening and Empowering our Community*





# Community Development Services



## FUNDING

The major source of funding for our Community Development Services comes from the NSW Department of Family and Community Services (FACS) for the Community Builders Program. During 2016-2017 our community programs were also supported by Camden Council, Carers NSW, and CCC fundraising activities.

## SUMMARY

This year marks the 30th Anniversary of Camden Community Connections and 30 years of service to the Camden LGA. As we reflect on the last 30 years and the contribution that CCC has made to the Camden Community and we consider what CCC has achieved we are both humbled and filled with pride. CCC began 30 years ago with a few local women committed to strengthening and building the Camden community. Today, in one of the fastest growing areas in NSW we are more committed than ever to building a strong, inclusive, connected community that supports people of all ages, backgrounds and abilities

This year we continued to listen to the changing needs of our community and we identified more ways to improve our community Builders Program including strengthening networks, increasing our promotional reach through social media and CCC members, utilising community infrastructure and effectively supporting volunteers. These improvements have assisted us in the effective delivery of a broader range of activities to a larger number of people. A great example of this is our Cultural Bus Tour program for seniors our Ballroom Dancing Classes and our Social Singers Group which have all grown considerably.

In addition to this we have continued to provide a range of regular programs such as our information sessions, Active Over 50's classes and walking groups. Camden Community Connections is now a Heart Foundation host for all walking groups in the Camden, Campbelltown, Liverpool and Wollondilly LGA's. We have also increased our range financial and legal support services to keep up with a rising number of people that require crisis assistance in our community.

While we reflect on the last 30 years, we are also firmly focused on the future of Camden Community Connections and expanding our Community Building Program into the Camden LGA and now into the wider Macarthur.

### Camden Just Walk It Walking Group

The Camden Just Walk It Group started in 2000. The Group walks every Tuesday along Camden cycleway.

### Heart Foundation

We now have entered in a partnership with the Heart foundation as a Host organisation. We will be supporting walking groups from Wollondilly, Camden, Narellan, Campbelltown to Liverpool.

### Macarthur Spinners and Weavers

Macarthur Spinners and Weavers Group started in 2002. The group meets on a Friday at the Camden CWA Building.

### Polymyalgia Rheumatica Support Group (PMR)

The PMR Group meets monthly from February-November in the CCC meeting room.

# Community Development Services

Events	Date
Services Afternoon Tea	19th July 2016
Anzac DVD Screening - Probus	6th July 2016
Quarterly Community BBQ	12th July 2016
Pokemon BBQ	13th August 2016
Family Fun Day	21st September 2016
Mental Health Breakfast	12th October 2016
Carers Week Lunch	19th October 2016
Beersheeba Breakfast	28th October 2016
Movie Screening	12th November 2016
Annual General Meeting	23rd November 2016
Get Up Stand Up Graduation	5th December 2016
Christmas Concert	15th December 2016
Quarterly Networking Event	22nd March 2017
Community BBQ'sommunity BBQ's	12th July 2016, 4th October 2016, 18th April 27
CCC Morning Tea	5th May 2017
Camden Play Day	21st May 2017
Quarterly Networking Event	21st May 2017
Oran Park Probus Presentation	6th June 2017

Programs	Dates
Information Sessions	24th August 2016 – Acupuncture and Chinese Medicine 19th October 2016 – Aromatherapy 30th November 2016 – Christmas Craft 29st March 2017 - Centrelink Digital Workshop 5th April 2017 – COTA “Your Wellbeing, your plan” 17th May 2017 – Wills and Power of Attorney
Cultural Tours	22nd July 2016 – Nepean Paddle Boat 14th September – Bowral Tulip Festival 4th November – Parramatta Experiment Cottage
Shopping Trips	19th August 2016 – IKEA Tempe 18th November 2016 – Penrith Westfield’s 3rd March 2017– IKEA Rhodes 12th May 2017 – Miranda Fair
Kids Club – School Holiday Activities	6th July 2016 – Science Workshop 13th July 2016 – Roller Skating
Creative Writings	8th October 2016 – 5th November 2016, 5th June 2017 – 3rd July 2017



Groups	Dates
Ballroom Dancing	16th August 2017 – 13th September 2016, 9th May 2017 – 6th June 2017
Social Singers	July 2016 – June 2017 (Weekly)
Pacific Labourers Program	



# East Village Spring Farm



## FUNDING

The Community Development Program for East Village Spring Farm is funded by Urban Growth NSW.

## SUMMARY

CCC continued to deliver the East Village community development program through until December 2015 and then after a six month break, due to construction delays, recommenced work at East Village in July 2016. We have seen significant growth in number of people moving to East Village, Spring Farm area and which means the needs are growing significantly as well. We are working with local organisations, businesses and individuals to better deliver services to the Spring Farm community. East Village Community development program areas of focus are; volunteerism, health and active living and cultural inclusion.

CCC has put in place a plan to build strong and sustainable community by seeking and encouraging volunteerism from East Village residents. CCC continues to seek volunteers to train and equip them so they can be part of the planning and delivering of East Village community events

Volunteer trainings include governance, volunteer management skills, and advocacy skills and grant writing skills. We focus on building a connected community with active resident participation and during this past year we have continued to support the existing community and integrated new residents as they have arrived.

Kids Club - Magic Show	6th July 2016
Kids Club	13th July 2016
Meet & Greet	24th August 2016
Kids Club - Super Heroes	28th September 2016
Halloween -Trunk or Treat	31st October 2016
Christmas Party	2nd December 2016
Australia Day	25th January 2017
Neighbour Day	25th March 2017
Petting Zoo & Easter Hunt	13th April 2017
Mother's Day - pampering	10th May 2017
The Moana Party	10th May 2017

We have continued door knocking, delivering welcome packs and engaging with residents, finding out their needs, hopes and aspirations for their community. We have also started to see more direct input from the residents which augurs well for the long term sustainability of a strong and connected community. Community events and door knocking is giving us opportunity to interact with East Village residents to support them further. CCC has ongoing programs such as Bright Eyes playgroup, Tai Chi, community BBQ, walking group and bus tours to connect East Village, Spring Farm community with the wider community.

As the East Village community has expanded, social infrastructure has been built including Spring Reserve Park and Burrell Road Dog Park. These facilities will be an integral part of our future community program planning. We are also very fortunate to have the opportunity to work in collaboration with Spring Farm Public School and make use of their facilities.

There has been a name change from East Village to Ever Green due to the handover between land developers from Urban Growth to AV Jennings. We continue to engage with East Village residents and have noticed that the community have become very active in using and communicating the social media space especially Facebook.

With the planned release of new land we are looking forward to continuing our work with the residents of East Village to build a strong sustainable community that is integrated into the surrounding area.



# Acknowledgements

The CCC Management Committee would like to thank all CCC staff and volunteers for their support during the past year.

Current Team Photo



Staff 2016-2017



Edward Feuerstein JP  
General Manager



Mark Jackson  
Acting Team  
leader



Maria Esma  
Maternity Leave



Aaron Frydman  
Program Assistant



Daniel Tujuba  
Community/Family  
Worker



Kayla Cornish  
Youth Worker



Jo Fawbert  
Bookkeeper  
Administration

## Volunteers

Jane Finall

David Booker

Aaron Frydman

Sharon Friere

Debra Nugent

Ray Monahan

Sandra Cooper

Sandra Wolverson

Diane Cole

# Acknowledgements

**CCC gratefully acknowledges the following people, partnership organisations, and government agencies for their financial or in kind support during 2016 - 2017.**

A2 Milk	Macarthur Centre for Sustainable living
Arthritis & Osteoporosis NSW Macarthur Support	Macarthur Chronicle
Group Australian Taxation Office	Macarthur Legal Centre
Bardia Public School	Mandy Daley Naturopath
Camden Aglow	Maximum Skating Smeaton Grange
Camden/Campbelltown Carpet Cleaning	McDonalds Macarthur
Camden Civic Centre	Mother Hubbard's Cupboard
Camden Council	Mt Annan High School
Camden Council Library Services	Mt Annan Leisure Centre
Camden High School	Mt Annan Wanderers
Camden Just Walk It	Narellan Community Health Centre
Camden Lioness Club	Narellan Town Centre Management
Camden Seniors Issues Group	News Limited
Camden Spinners and Weavers	Northcott Disability Services
Carers NSW	NSW Department of Education & Communities
Centrelink	NSW Department of Family and Community
Chris Patterson, State Member for Camden	Services NSW Police
Cobbitty Markets	Open Secret Narellan
Disability Macarthur	Pizza Hut Narellan
Dumaresq Street Cinemas	PMR Group
Elderslie High School	Runnymede Group
Elizabeth Macarthur High School	Russell Matheson, Federal MP for Macarthur Sassine
Energy Accounts Payment Assistance Scheme NSW	Hair Narellan
Energy & Water Ombudsman NSW	Sector Connect
Glenn Haworth	Simplicity IT
Gloria Jeans Narellan	South West Sydney Area Health
Go Vita Narellan	South West Sydney Family Referral Service – Uniting
Gracie Jiu Jitsu	Care Burnside
Headspace	South West Sydney PHN
Heart Foundation	Stockland
Jackie Murray MDG Studio	Sydney Water
John Holland	TAFE NSW
Kelloggs	The Benevolent Society
Kid in Motion	The Black Dog Institute
Lara Symkowiak, Mayor of Camden	The Pit Personal Defence Studios
LCSA	Thomas Reddall High School
Lees Massage & Acupuncture	Traxside Youth Health Service
Leppington Forest Lawn Cemetery	Urban Growth NSW
Leppington Public School	Voiceology Australia
Lifeline	Western Sydney University School of Medicine
Lolliland	Western Sydney University Uniclinic
Luigis Restaurant Narellan	W.I.L.M.A. Women's Health Centre
Macarthur Advertiser	Macarthur Greeks

# Financial Report

## Treasurer's Report

Camden Community Connections has reported a net surplus of \$28,307 for the year ending 30 June 2017.

Total Revenue:               \$709,297

Total Expenses:             \$680,990

The closing cash balance as at 30 June was \$342,588 with a retained surplus of \$303,503

Full details are available in the audited Financial Statements included in the annual report.

A handwritten signature in blue ink, appearing to read 'Lyndell Scott', is written over a light blue rectangular background.

**Lyndell Scott**  
Treasurer





Camden  
Community  
Connections



Camden  
Community  
Connections

[www.camdenconnections.org.au](http://www.camdenconnections.org.au)

[www.facebook.com/camdenconnections](https://www.facebook.com/camdenconnections)