



COMMUNITY CONNECTIONS

"Making one person smile can change the world – maybe not the whole world, but their world."

Hi everyone,

It is my pleasure to launch Camden Community Connection's new quarterly newsletter and we hope through this newsletter to provide an interesting mix of information that will inform our local community about our upcoming events, activities and programs and make a positive contribution to building a more resilient and connected community.

CCC staff are enthusiastic to embrace the opportunities 2013 will bring and following our staff planning day in December last year, we have scheduled a full calendar of events activities and programs to reach all groups in the community from young children through to seniors.

We are excited about the launch of our quarterly networking events and the first one is scheduled on 8th May at Camden Library. The aim of these regular networking events will be to provide information on current issues as well as provide an opportunity for people from all sectors of our community to connect with each other in a relaxed environment. We are looking forward to meeting as many of you as possible at our first event in May and further details will follow shortly.

Working in the community sector is certainly very rewarding and yet there are times, with our limited resources, that we feel our capacity to service the community is compromised and it may feel frustrating that we cannot extend our reach further. The quote above is a great reminder that even small organisations such as CCC have an opportunity to make a significant change to the lives of individuals within our community.

We are looking forward to working with our partners and the community in the Camden LGA during the coming year and we always welcome feedback from all members of the community.

Happy New Year!

Sue

PROJECT SNAPSHOT

International Girls Day

On the 16th November 2012 CCC held an International Girls Day event at Mt Annan High School. The aim of the day was to celebrate and promote confidence and self-esteem among girls and young women. The event was opened by the Mayor of Camden, Lara Symkowiak, and local businesses, artists and professionals provided a variety of workshops for the girls, ranging from hair and makeup, zumba, DIY projects, circus, visual arts, self-defense and finance. The feedback from this event was very positive and it is likely to become an annual event on our calendar.



Leppington Forest Lawn Bus Service

October saw the launch of CCC's free monthly bus service to Leppington Forest Lawn cemetery. For some Camden LGA residents the trip to the cemetery can be time consuming and challenging especially if they do not have private transportation. Leaving from the Narellan library car park our bus runs at 10.00am on the second Monday of every month and light refreshments are provided at the

Christmas Giving Tree

With the support of Camden Council Library staff, CCC launched a Christmas Giving Tree project to collect Christmas gifts for those less fortunate in our community. We were overwhelmed by the generosity of local residents who contributed 313 gifts to the Christmas Giving Tree. The gifts were distributed to families through Macarthur Temporary Family Care, Mother Hubbard's Cupboard and Lifeline and over 100 families benefitted from this community spirit of Christmas giving.

WHAT'S ON

FEBRUARY

'Food 4 Thought' Food Security Program (6 weeks duration)	February 27, March 6, March 13, March 20, March 27, April 3
Easter Raffle	Buy your tickets from February
CCC Garage Sale	Saturday February 23 @ the Narellan Community Hall
TAFE computer course	Commencing February for 17 weeks. Various locations

MARCH

International Women's Day Trivia Night	Friday March 8 @ the Camden Civic Centre
Seniors Week: Tai Chi High Tea	Monday March 18, 12.30-3.00pm ARTyCaf @ Narellan Library
Free Shopping Trips	Friday March 15, Liverpool Westfield Friday July 5, Wetherill Park Stocklands Friday November 15, Penrith Westfield
Parent Support Program	Commencing March for 4 weeks, March 19, 26, April 2, 9
Mystery Bus Tour for Seniors	Tuesday March 26
Project Connect: Mosaic community workshops	Commencing March to May @ the Macarthur Centre for Sustainable Living

APRIL

Cultural Bus Tour	Nam Tiam Temple, Friday April 5
Youth Week: Cooking Workshop (Youth with Disability)	Tuesday April 9 @ the Macarthur Centre for Sustainable Living
Mother's Day Raffle	Buy your tickets from April
Bunning's BBQ Fundraiser	Saturday April 13 @ Bunning's Narellan
Kid's Club	Self Defence workshop Wednesday April 17 and Athletics workshop April 24
Youth School Holiday Program	Putt-Putt Golf Thursday April 18 and April 24 (activity TBA)
Focus Group- Register your interest.	Wednesday April 10: How to create a stronger and more resilient community?

UPCOMING

Quarterly Networking Event. Guest speaker on Mental Health	Tuesday May 7 @ Camden Library Multipurpose Room
Big Brother Program for Young People	Commencing May
Cultural Bus Trips for Seniors	Friday September 6 and Friday November 1

ONGOING

Children	Bright Eyes Playgroup every Monday @ Mount Annan Birriwa Reserve Leppington Playgroup every Tuesday @ Leppington Community House with craft group for parents Playlinks Playgroup every Wednesday @ Currans Hill Sedgwick Reserve Brightstars Playgroup every Thursday @ Harrington Park Community Centre
Youth	Thursday Night Outreach for young people @ the Narellan Library Forecourt (October to April) Case management and referral also available by appointment
Seniors	Bus Service to Leppington Forest Lawn. The second Monday of every month Seniors Issues Group. Meeting on the first Monday of every second month Tai Chi Classes Every Monday @ Narellan from 12.30-1.30pm or every Tuesday @ Harrington Park from 10-11am
Groups	Camden Just Walk It Walking Group. Every Tuesday @ the Nepean Cycleway Mt Annan Wonderer's Walking for Pleasure Walking Group. Every Friday @ Mt Annan Botanic Garden Macarthur Spinners and Weavers. Every Friday @ Mt Annan Botanic Garden Polymyalgia Rheumatica Support Group. Every second Tuesday of the month
General	Sydney Water Payment Assistance Scheme (PAS) TAX Help (July to October)

COOKERY CORNER

Summer Lime Pineapple Punch

Ingredients

2 cups pineapple juice
1 ½ cups apricot juice
1 cup ginger beer
1 cup soda water
¼ cup lime juice
Crushed ice
2 limes thinly sliced and maraschino cherries



Method

Pour all of the juices into a large mixing bowl. Pour into a serving jug or punch bowl and add ice, lime slices and cherries. Serve immediately.

(Thanks to Lesley Lee from Macarthur Temporary Family Care for providing this recipe)

Submit your favourite recipe for a chance to win a double pass to Dumaresq Street cinemas. The winning recipe will be featured in the Autumn Issue of Community Connections. Email info@camdenconnections.org.au

CANDID CAMDEN



Camden Town Farm, Harmony Day 2012

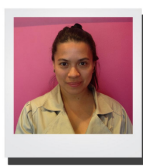
Submit your photo for a chance to win a double pass to Dumaresq Street cinemas. The winning photo will be featured in the Autumn Issue of Community Connections. Email info@camdenconnections.org.au

OUR TEAM

Contact us on 4647 1283 or info@camdenconnections.org.au
Community Office 1, 19 Queen Street, NARELLAN 2567



Sue Watt
Manager

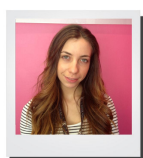


Catherine Gonzaga
Children's Worker

Kathy Key
Bookkeeper



Maria Esma
Youth Worker



Carmelina Nunnari
Community Development
Worker

Myrtle Mooney
Administration Officer



Seniors Week Tai Chi High Tea

**NSW Seniors
WEEK**
17-24 March 2013
www.nswseniorsweek.com.au

**Live
Life!**



**Monday 18th March
12.30-3.00pm**



At the ArtyCaf
(Next door to Narellan Library)



FREE event for Seniors

**Tai Chi Demonstration
Complimentary High Tea
Live Entertainment
Give-aways**



Bookings essential, numbers are limited!

Call Camden Community Connections on 4647 1283



**Camden
Community
Connections**

Community Office 1, 19 Queen Street NARELLAN

P 4647 1283 | F 4647 3496

E info@camdenconnections.org.au